

Otto Kapfinger (ED)

HERMANN KAUFMANN WOODWORKS

ökorationale baukunst – architecture durable

SPRINGER VERLAG

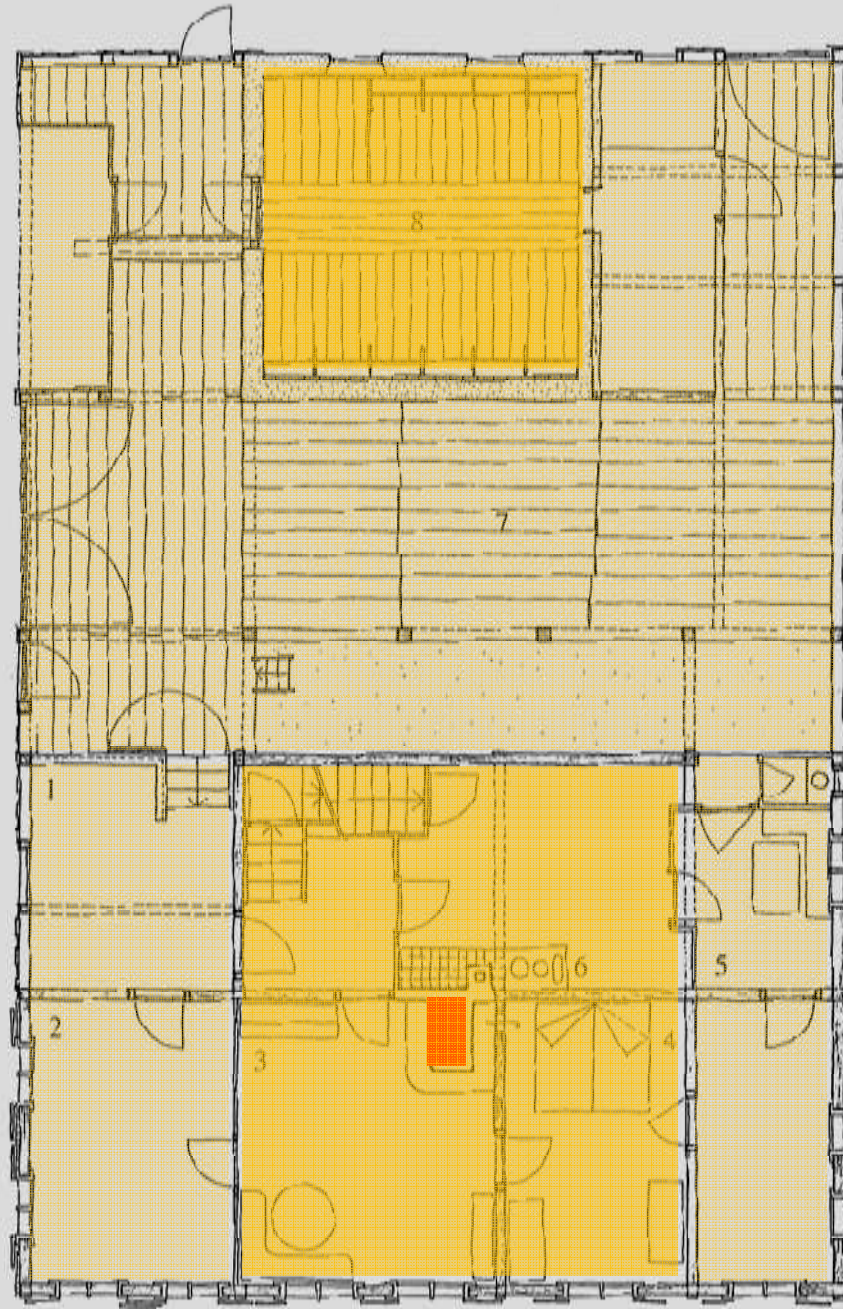






BÄCKERHANS BREGENZERWALD ÖSTERREICH





1. Rest vom Schopf
2. ehemaliger Schopf
3. Stube
4. Kammer
5. Eßplatz
6. Flurküche
7. Tenne
8. Stall







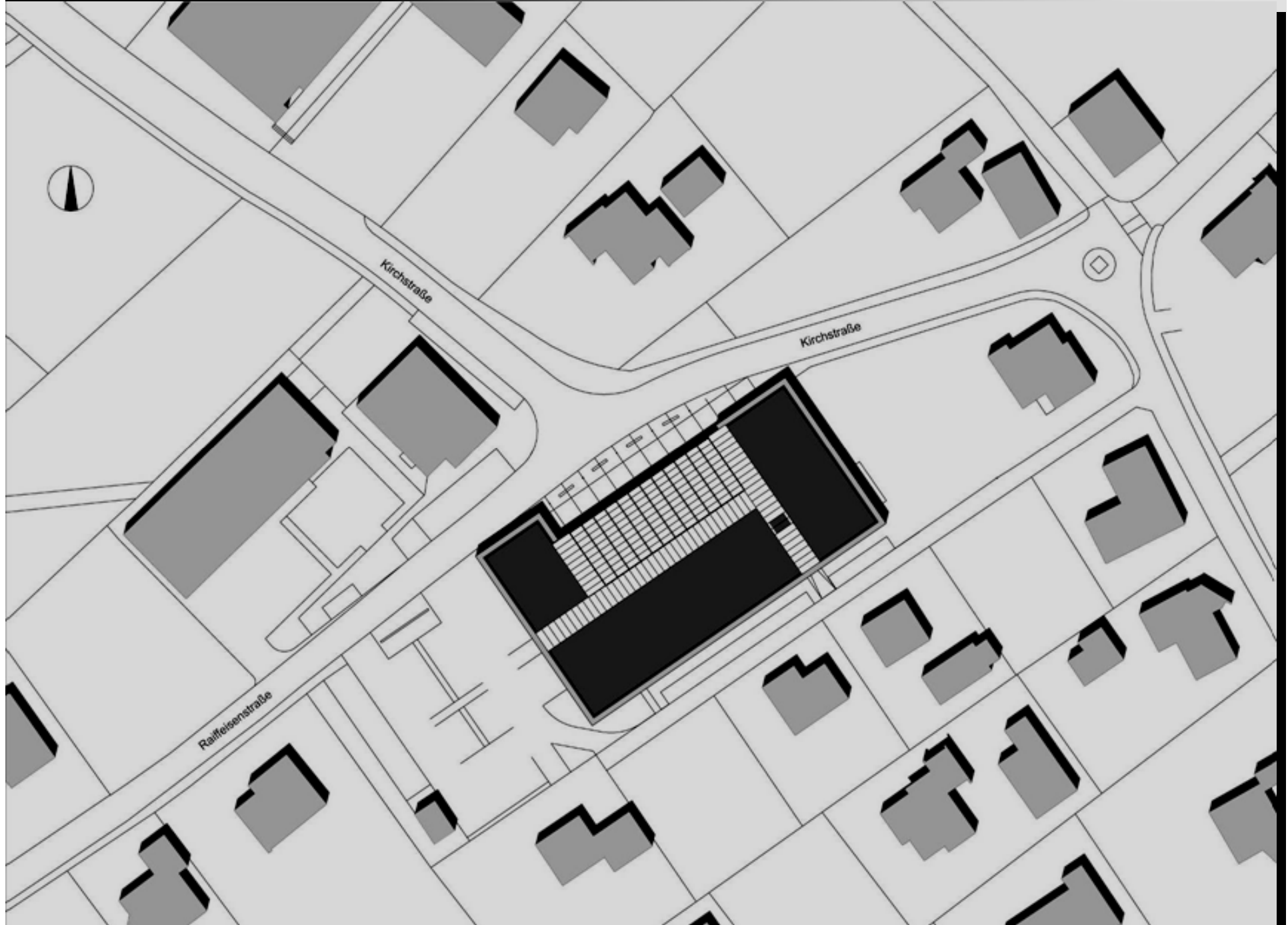




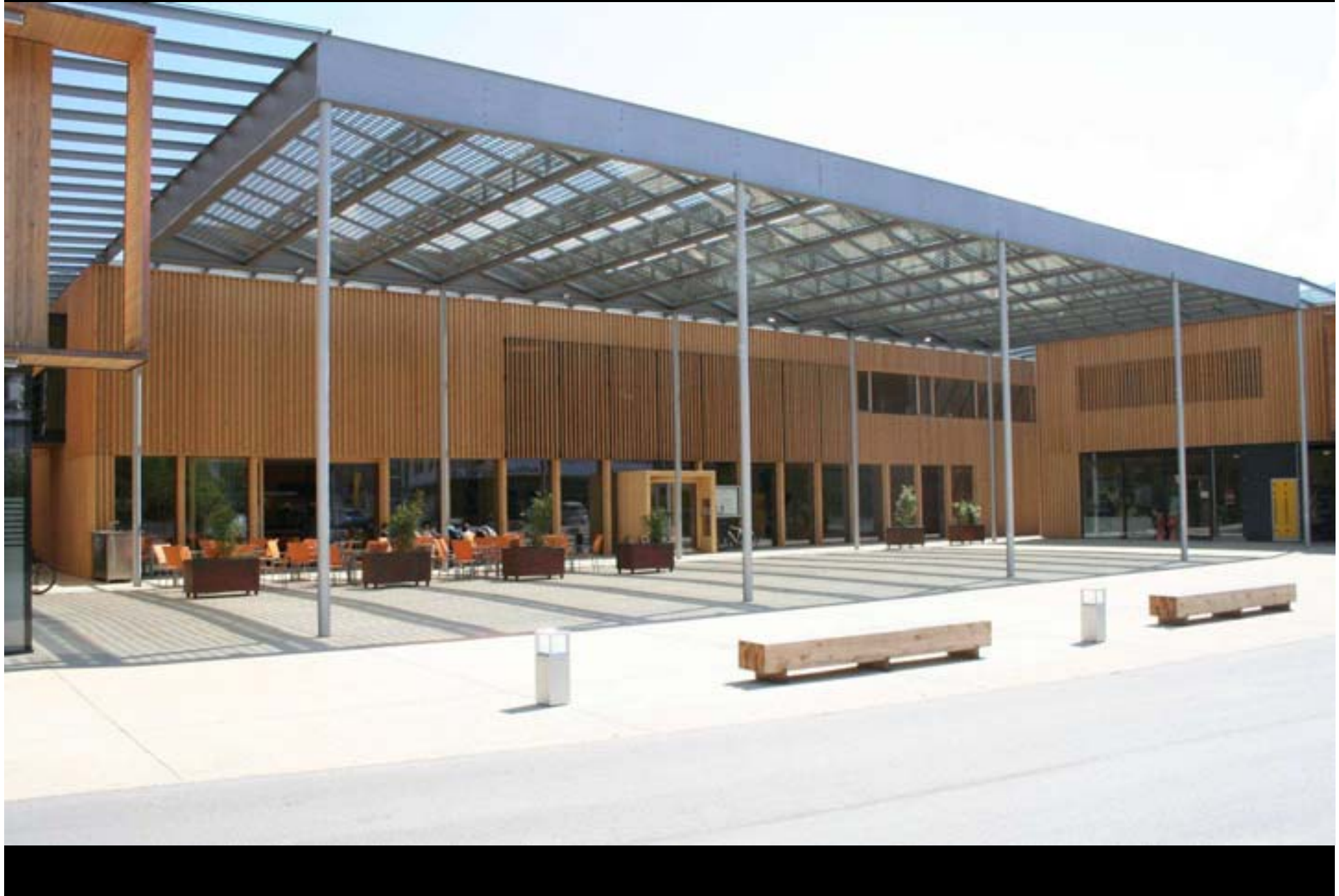


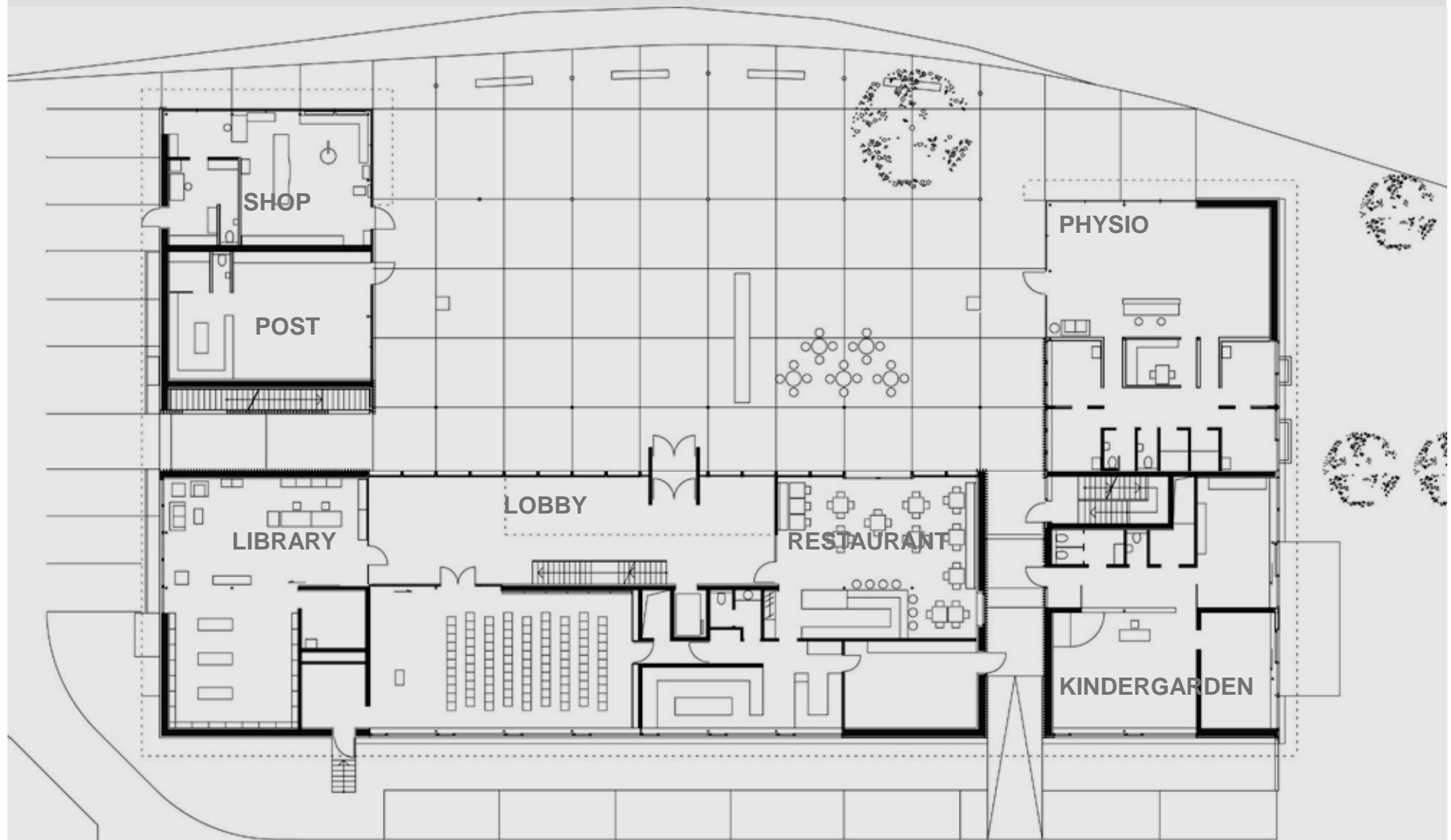


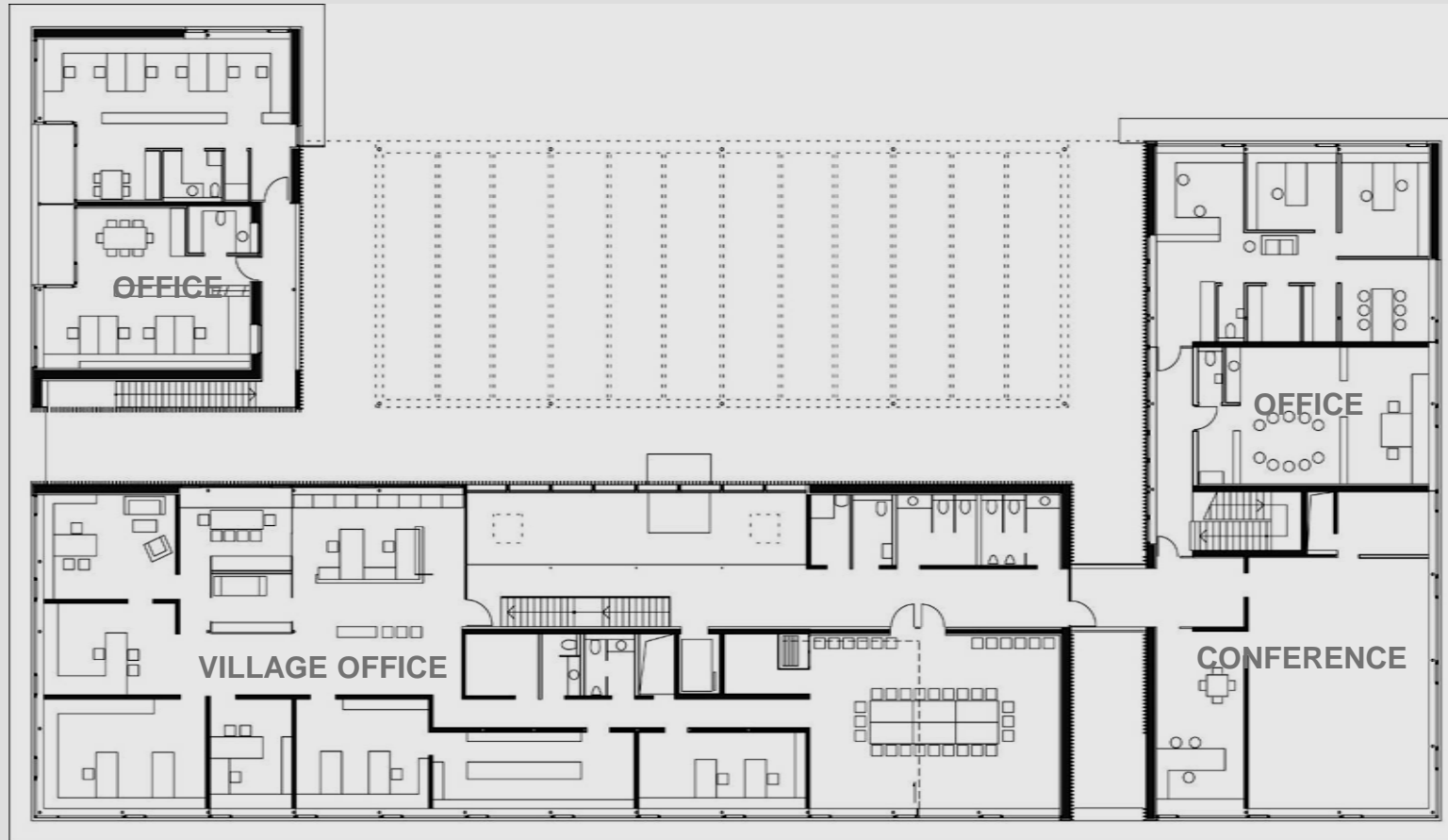






































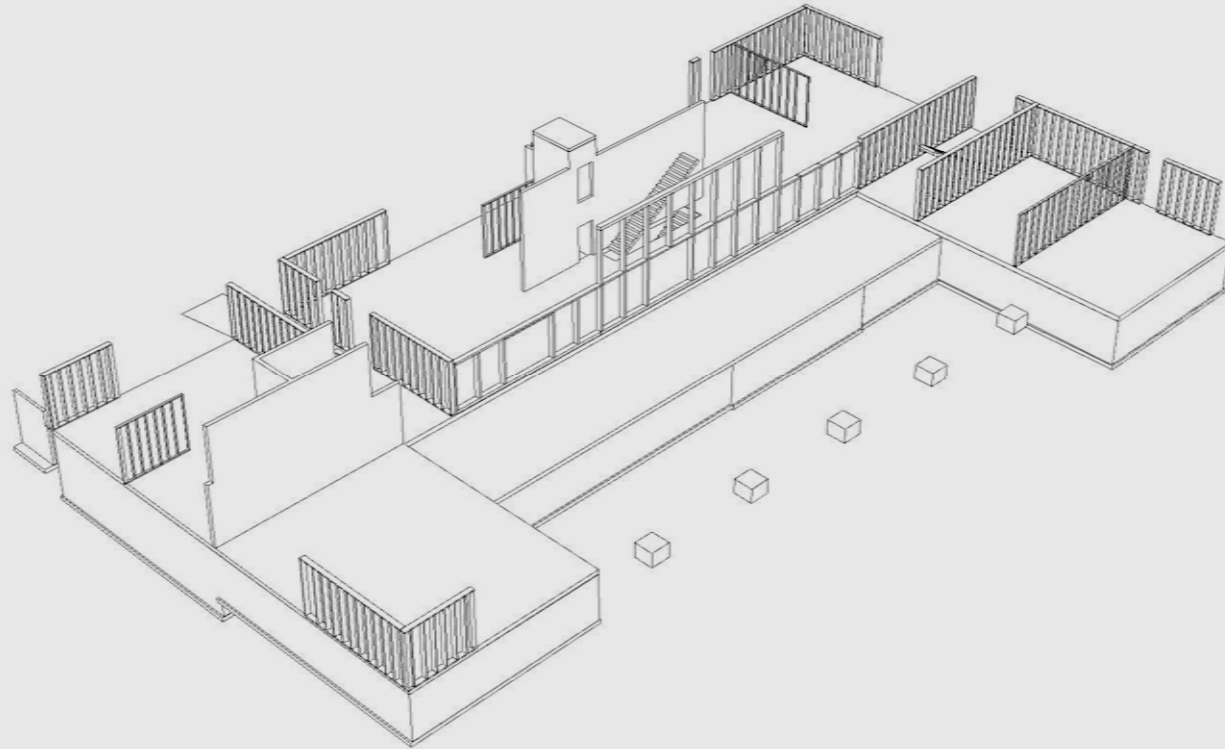


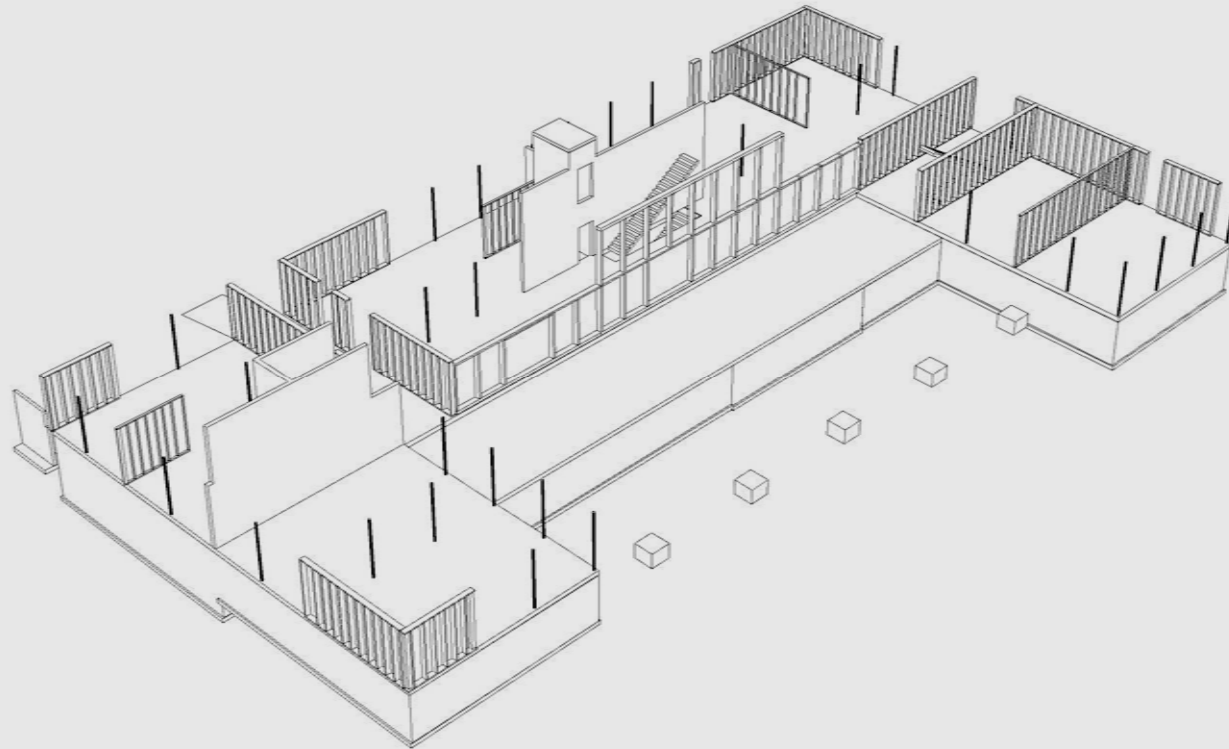


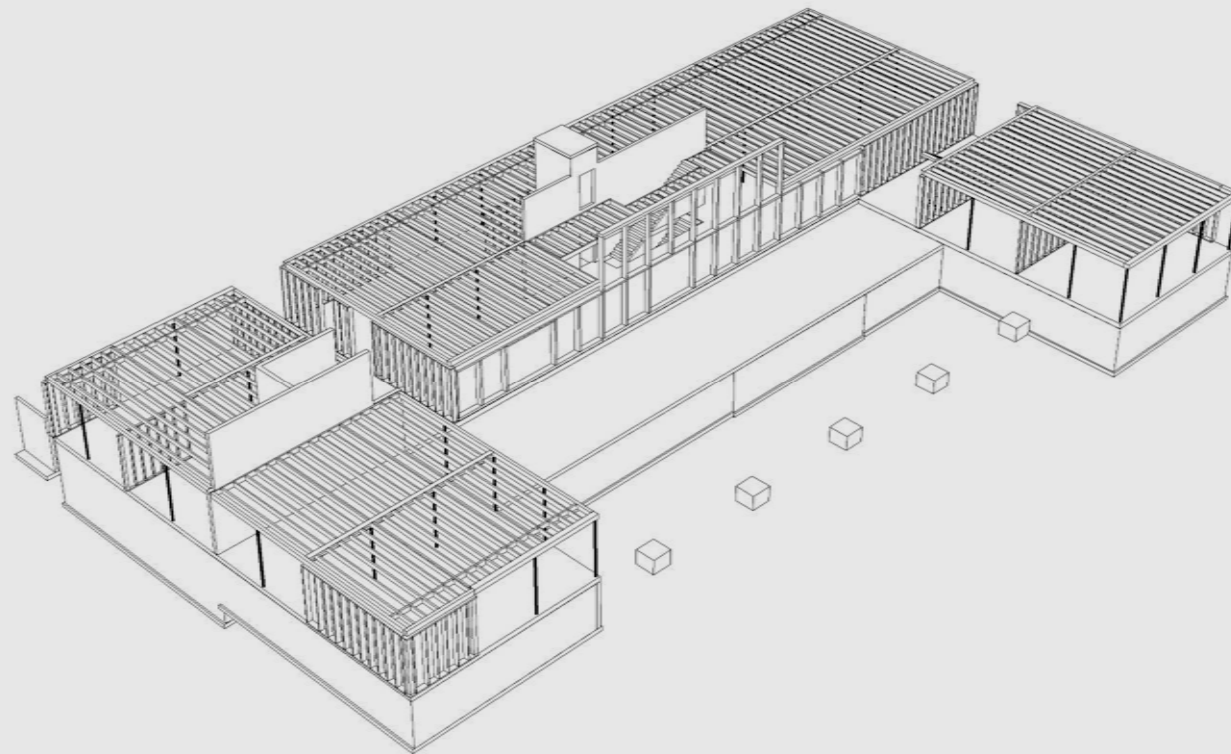


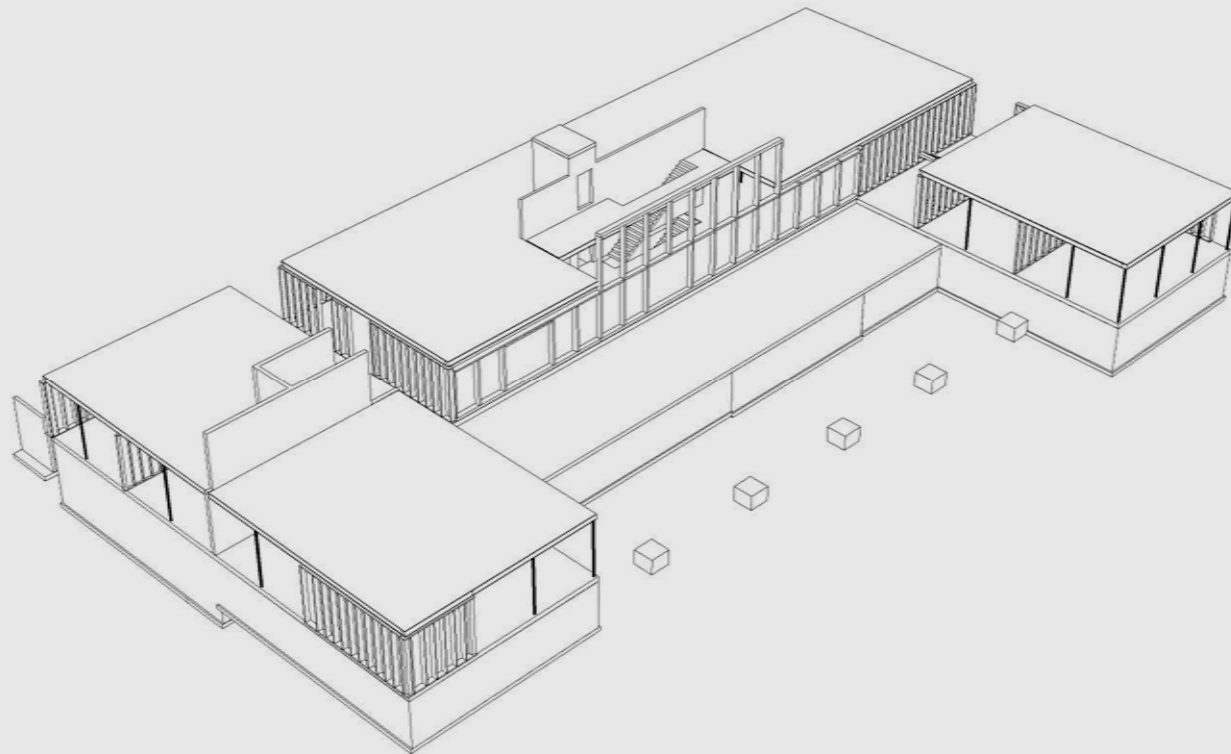


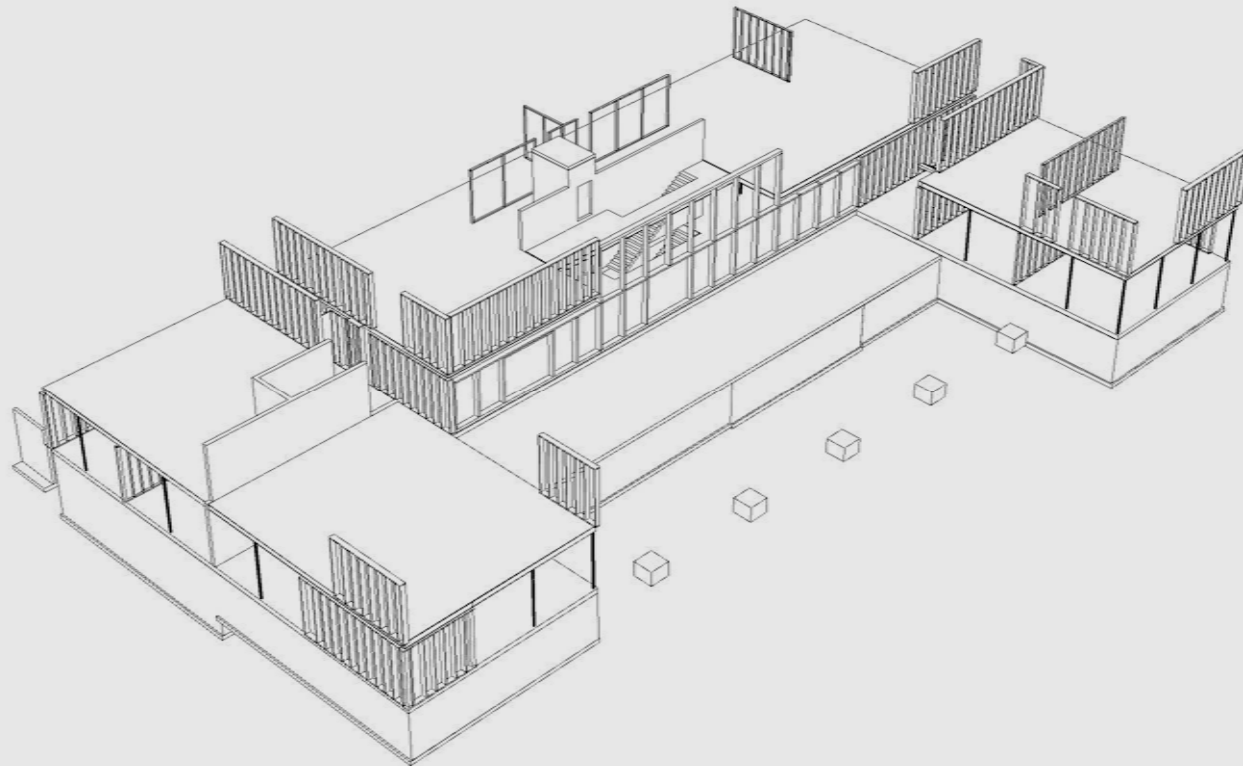


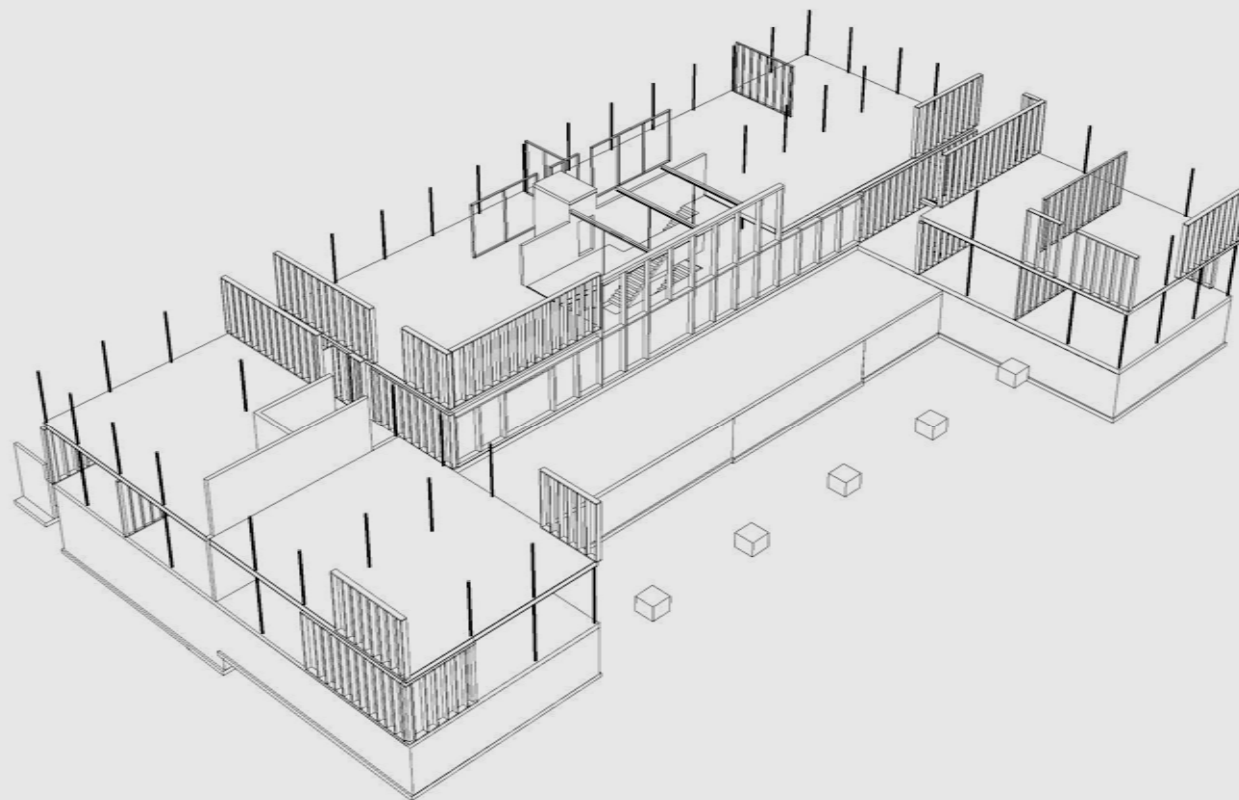


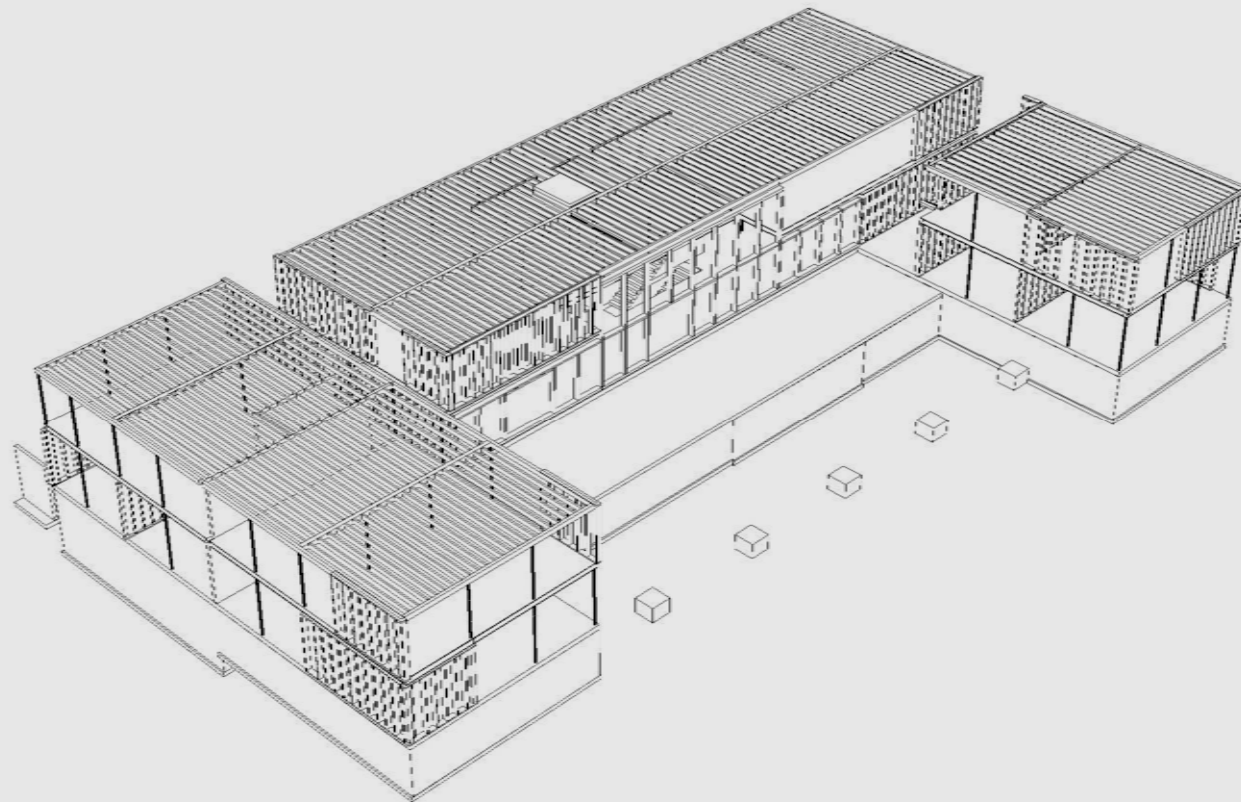


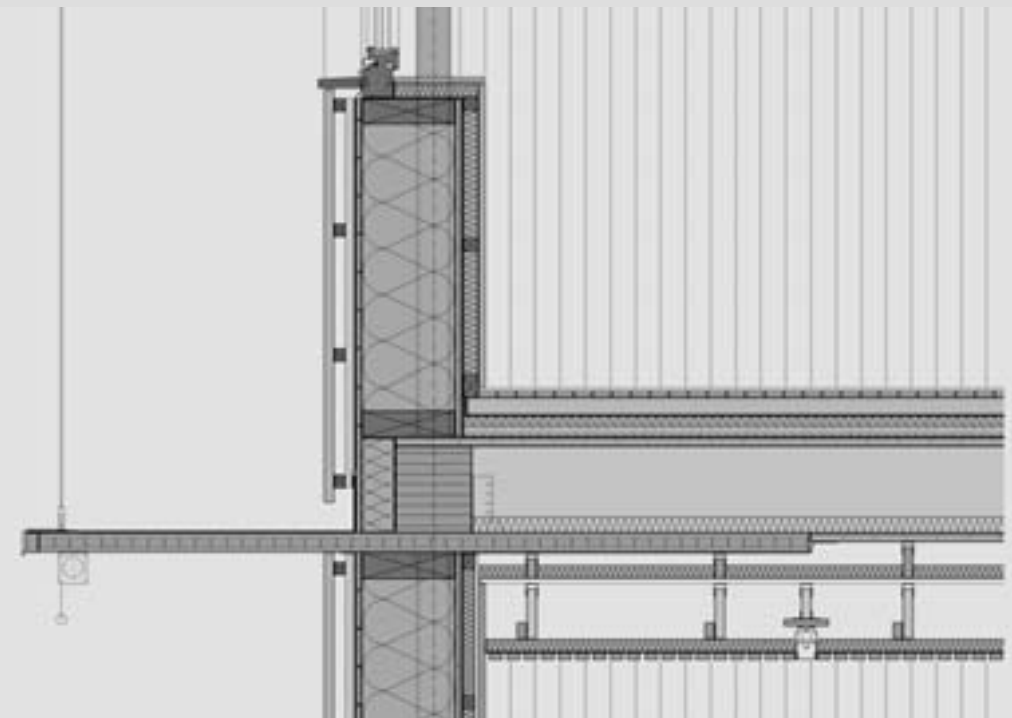
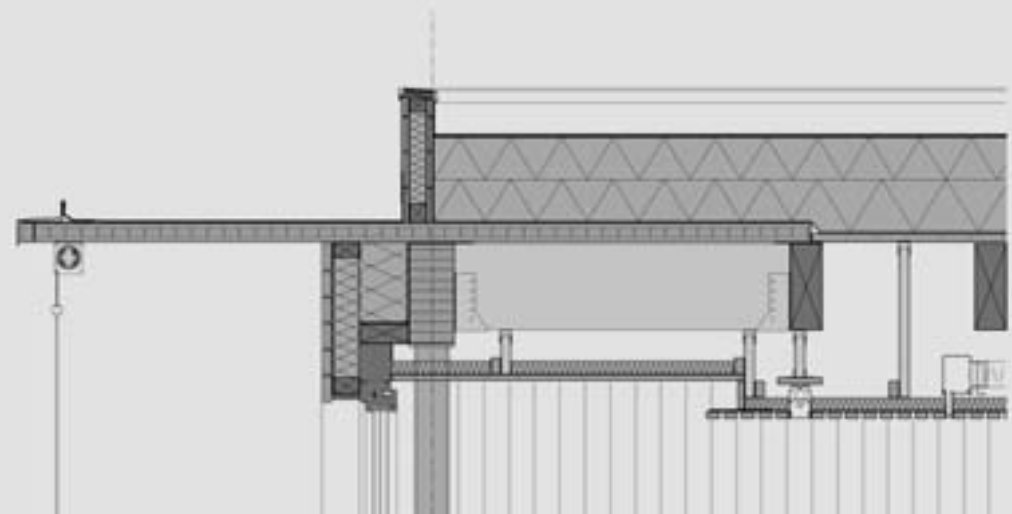
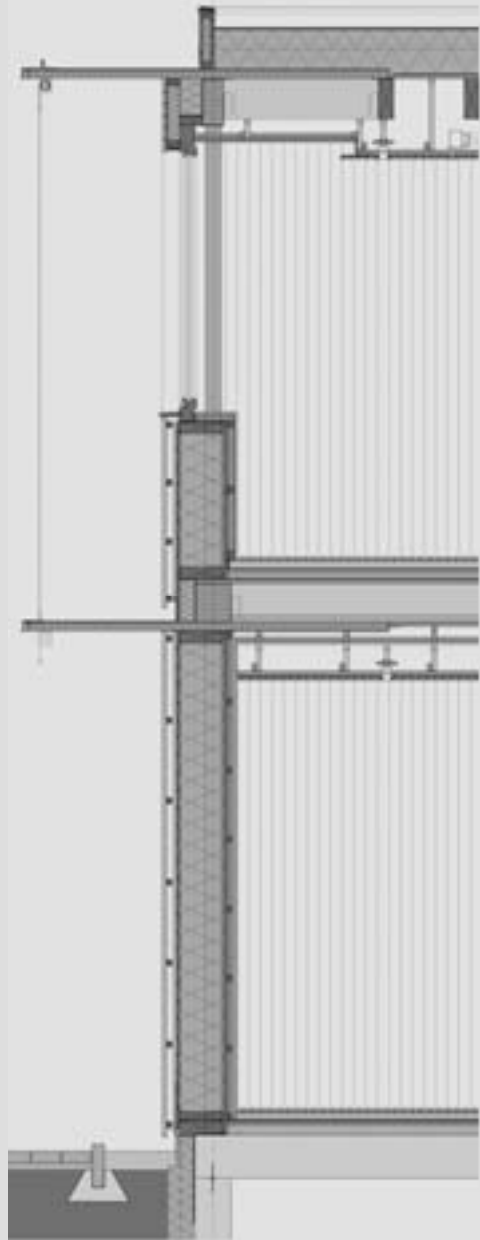
















AGREED GOALS FOR THIS BUILDING

PRODUCTION OF AN ECOLOGICAL PRESENTING PROJECT WITH JUSTIFIABLE COST

HALVING OF THE SPECIFIC PRIMARY ENERGY EMPLOYMENT BY PRODUCTION OF THE BUILDING OPPOSITE CONVENTIONAL PASSIVE HOUSES (<18 KWH/M²A)

LOWERING OF THE ECOLOGICAL POLLUTANT POTENTIAL ON HALF TO NOT OPTIMIZED BUILDINGS

PASSIVE HOUSE QUALITY

ENERGY SUPPLY FROM RENEWABLE ENERGY SOURCES

CREATION OF HEALTHY AND COMFORTABLE WORK ENVIRONMENT IN PARTICULAR MINIMIZATION OF THE POLLUTANT CONCENTRATIONS IN THE ROOM AIR

PRINCIPLES

REGIONAL CREATION OF VALUE :

LARGE USE OF WOOD FROM THE MUNICIPALITY FOREST

NO CHEMICAL WOOD PRESERVATION

ECOLOGICALLY OPTIMIZED MATERIALS

IF POSSIBLE FROM REGENERATING RAW MATERIALS

AVOIDANCE OF PVC

AVOIDANCE OF SOLVENT

AVOIDANCE OF HALOGENATED HYDROCARBONS

AVOIDANCE OF MATERIALS WITH FORMALDEHYDE

FIRST BASE FOR THE ECOLOGICAL VALUATION:

PLANNING INSTRUMENT WHICH PERMITS AN ECOLOGICAL AS WELL AS A BIOLOGICAL OPTIMIZATION OF BUILDINGS

THE BUILDING CONSTRUCTIONS ARE COMPARED IN DETAIL WITH ONE ANOTHER ALONG THE ECOLOGICAL LIFE WAY:

ECOLOGICAL EXPENDITURE IN MANUFACTURING (RESSOURCE MANAGEMENT AND EMISSIONS)

ECOLOGICAL EXPENDITURE FOR PROCESSING AND INSTALLATION

WORKING CONDITIONS

CONSTRUCTION WASTE

SERVICE LIFE

FUNCTIONALITY

RECYCLING AND REMOVAL







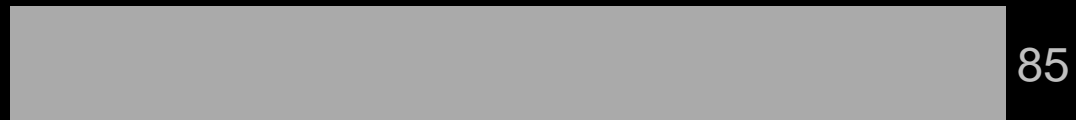




Vergleich Jahresheizenergiebedarf unterschiedlicher Gebäudeausführungen

[kWh/m²a]

Gebäude Jahr 1970



85

Niedrigenergiehaus



50

GMZ Ludesch



13,8

Treibhauspotenzial GWP (kg CO₂/m² BGF)

Standardneubau
/ Verwaltung



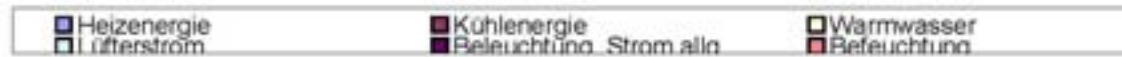
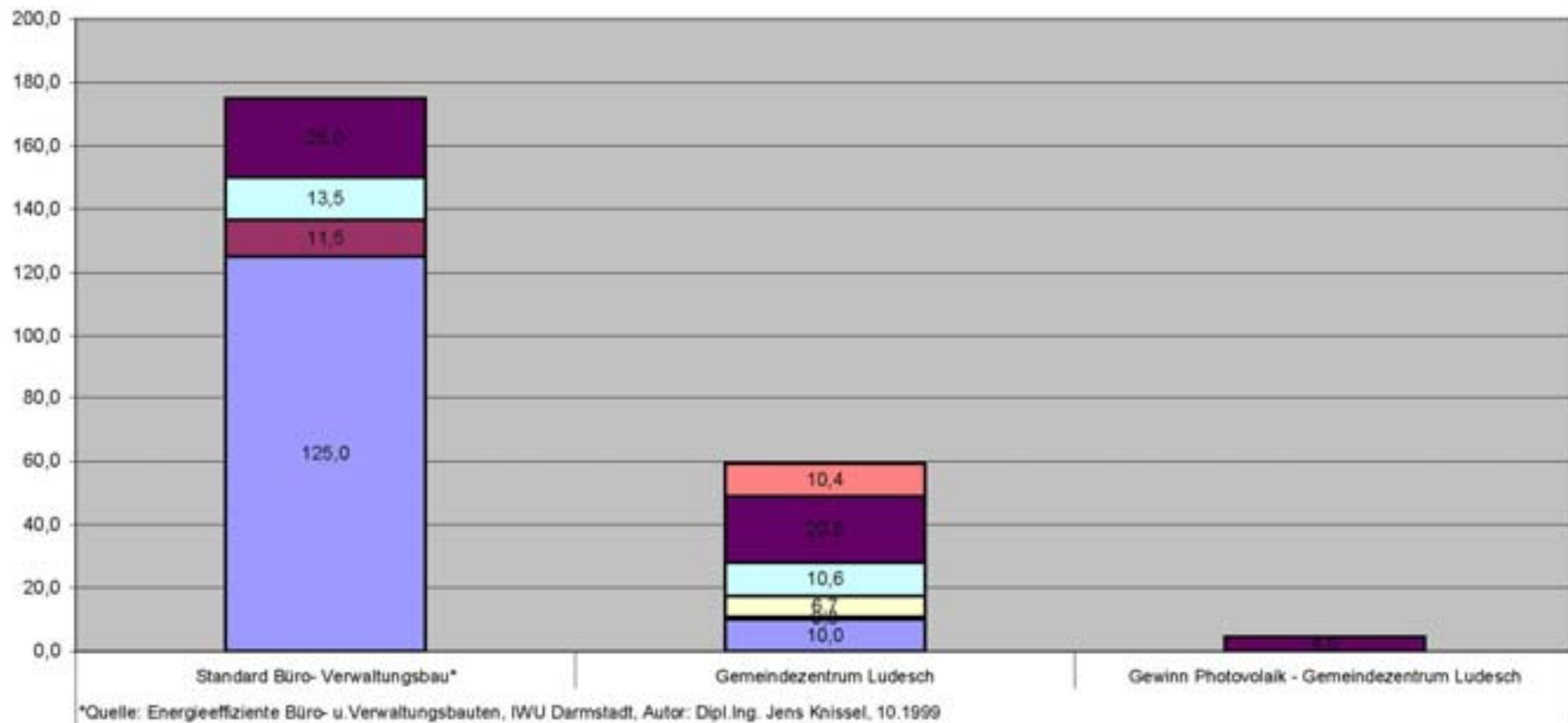
310

GMZ Ludesch

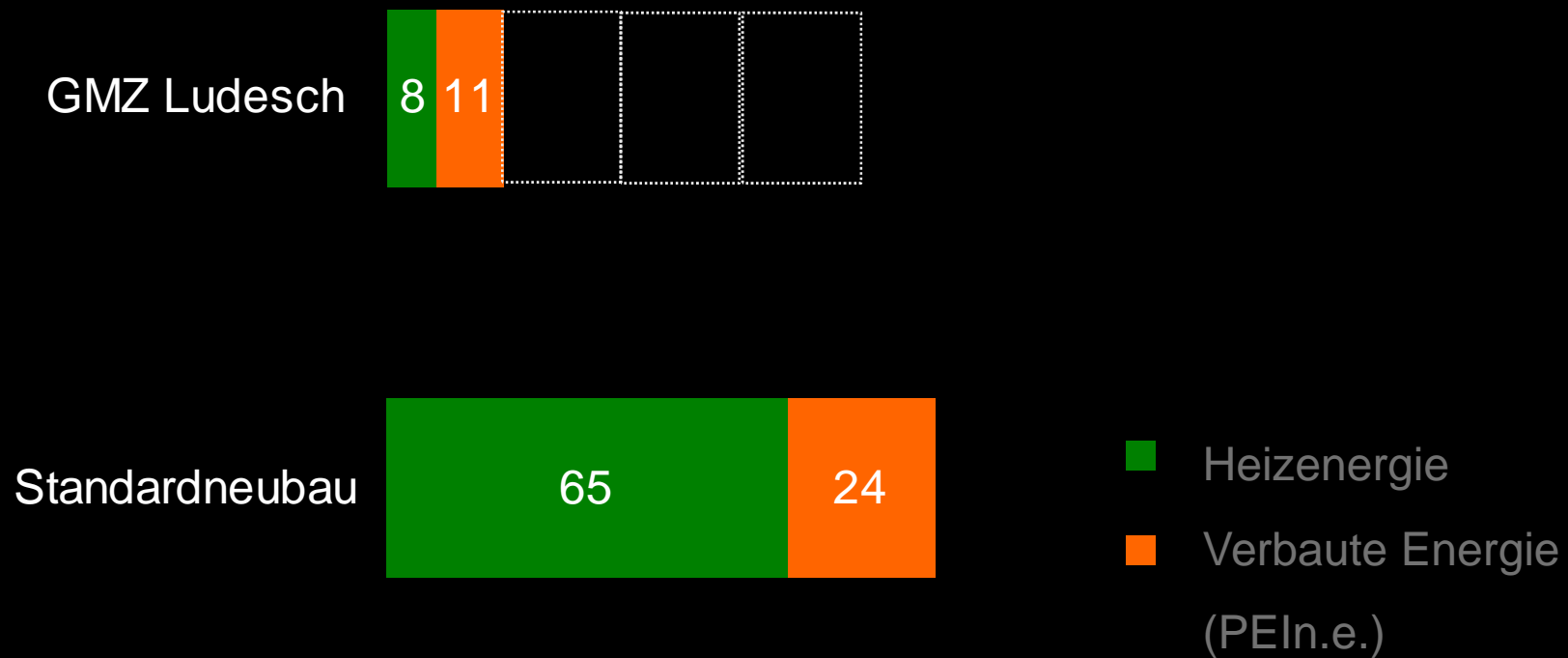


62

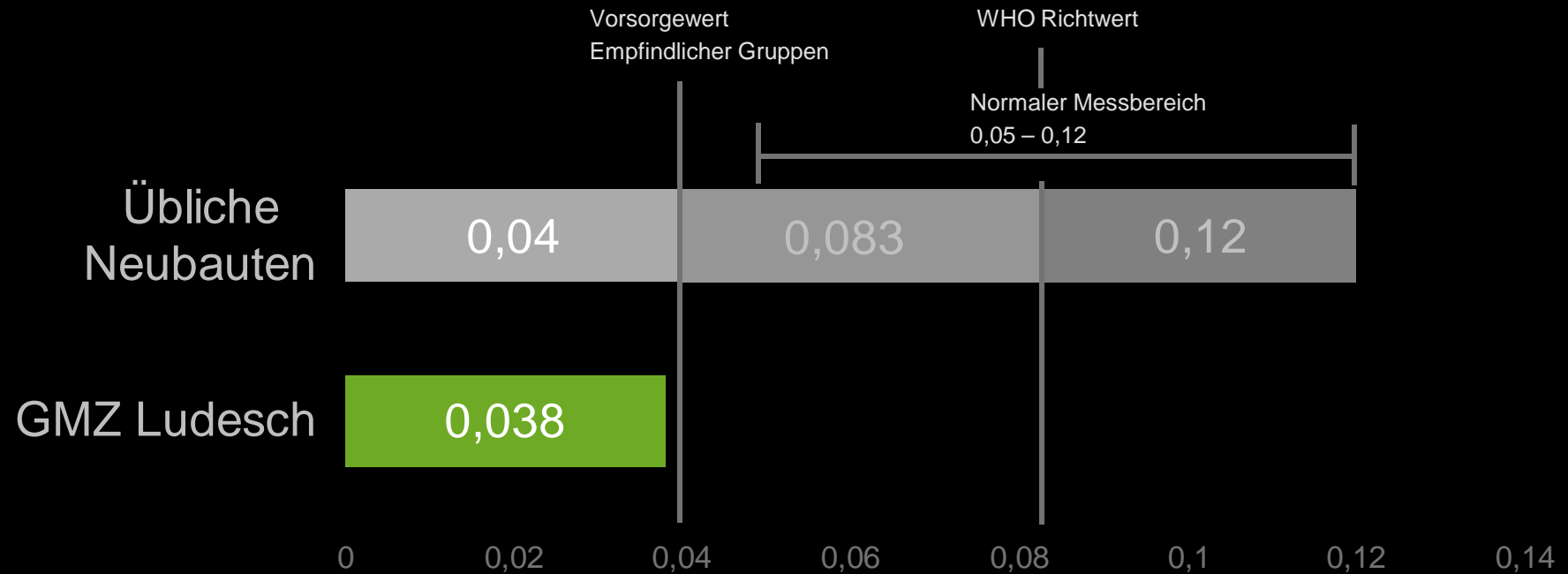
Endenergiebedarf



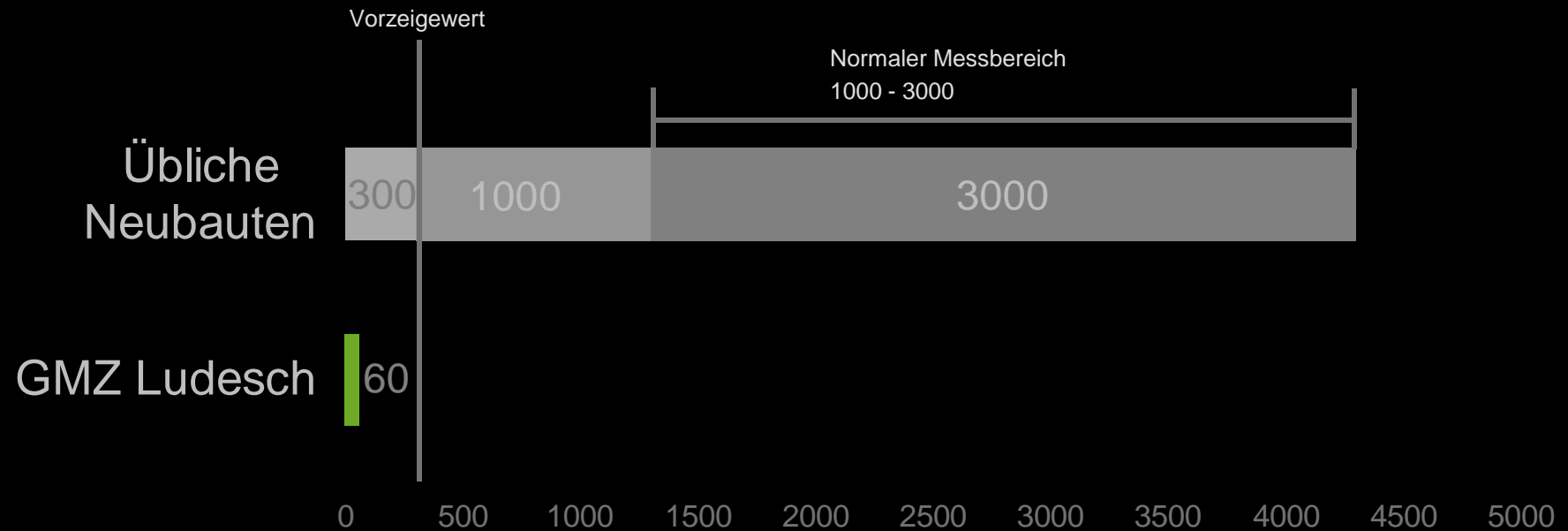
Primärenergiebedarf für die Errichtung GMZ Ludesch (Haus A, B und C – ohne Keller)
im Vergleich **Primärenergieeinsatz** [kWh/m²aBGF]



Formaldehyd [ppm] Messung



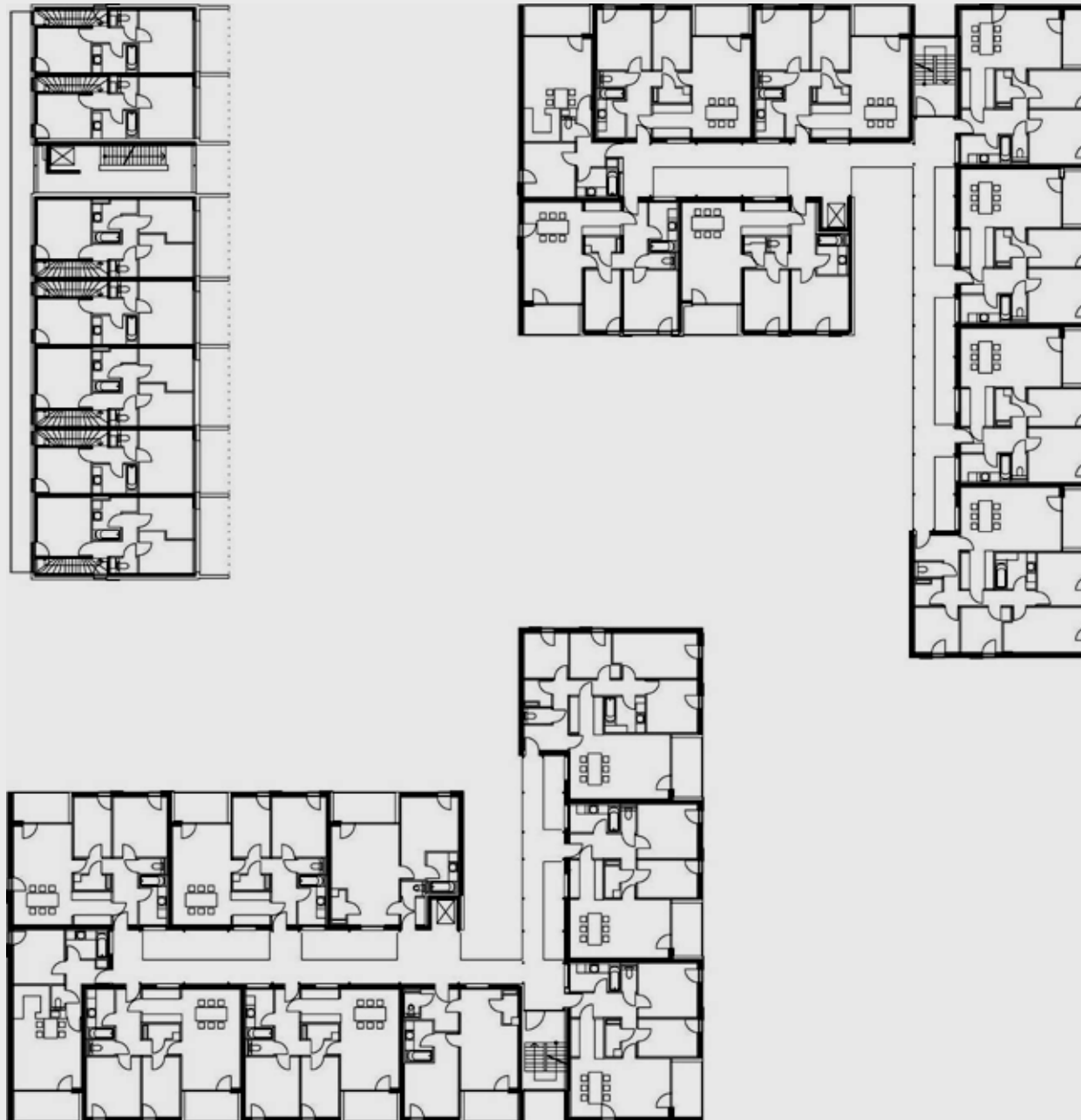
Messung VOC (flüchtige Kohlenwasserstoffe)

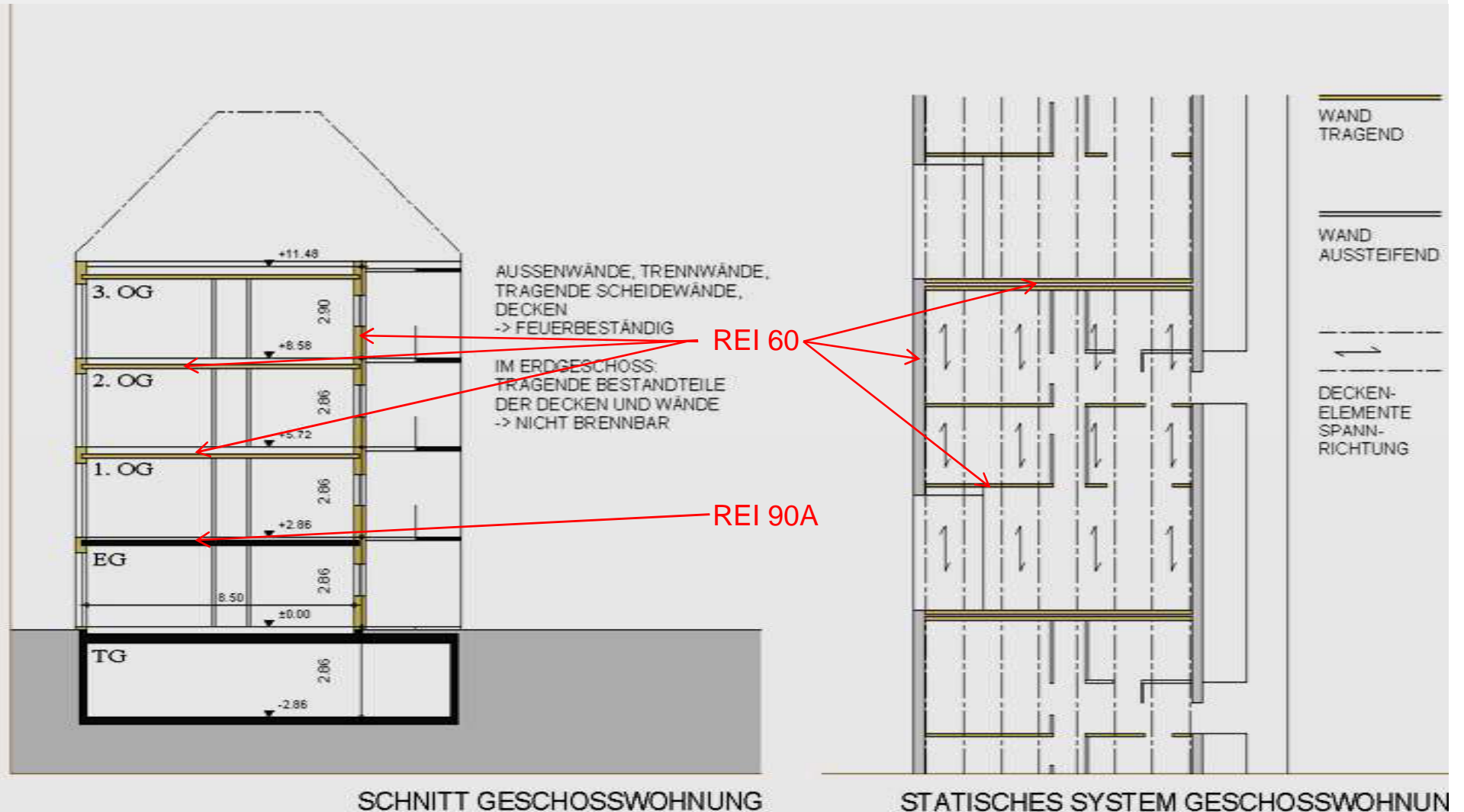


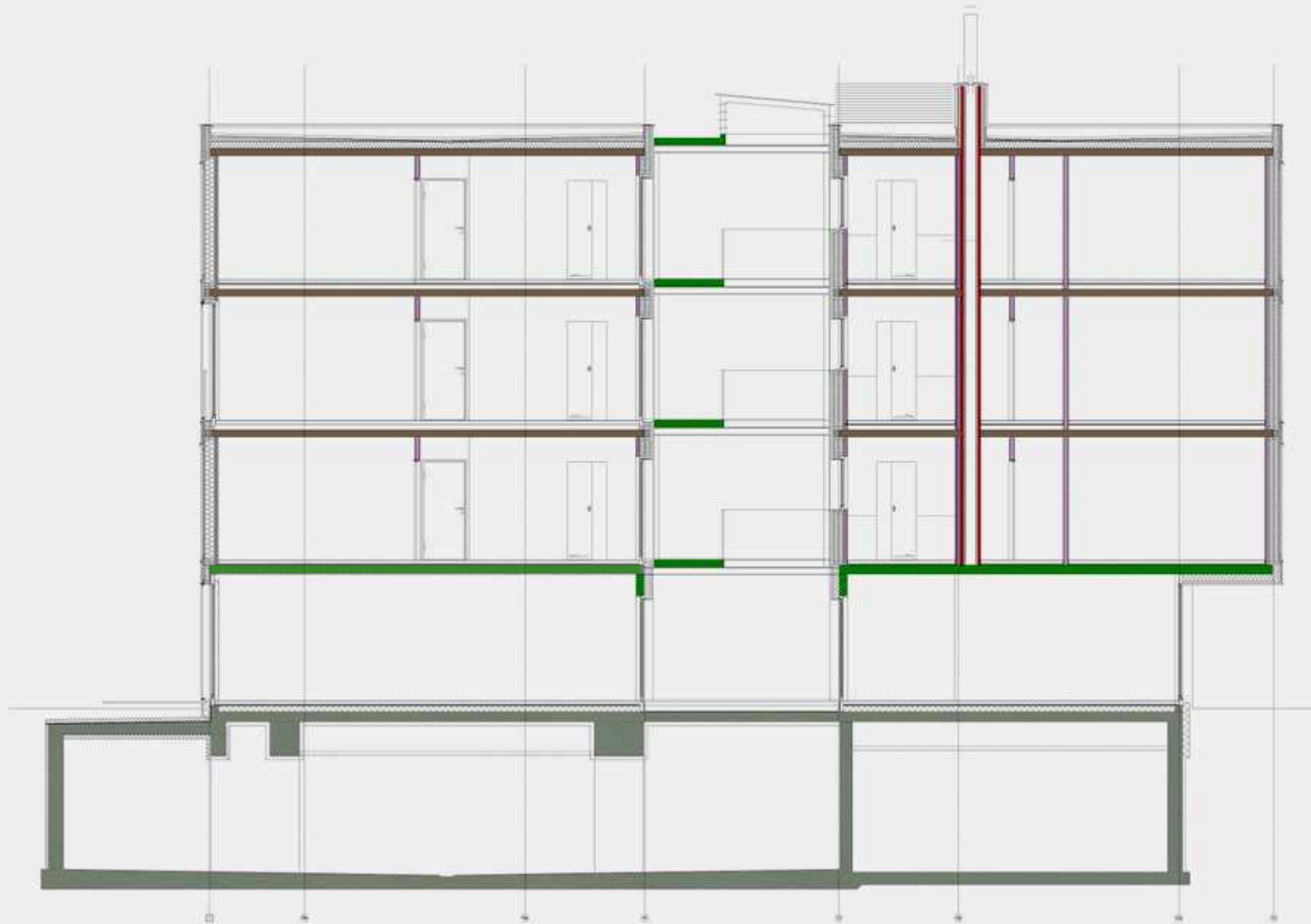
www.hermann-kaufmann.com

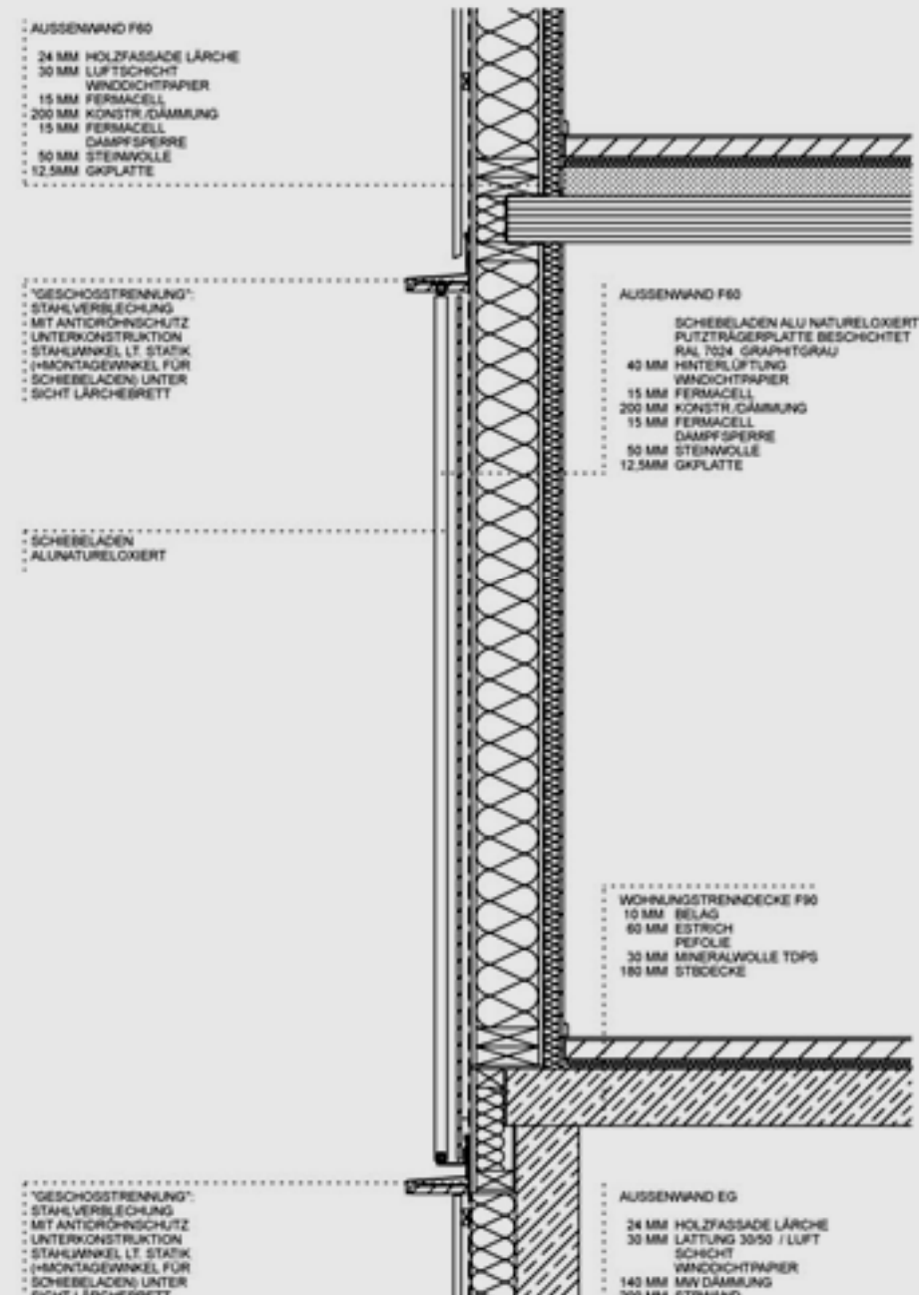
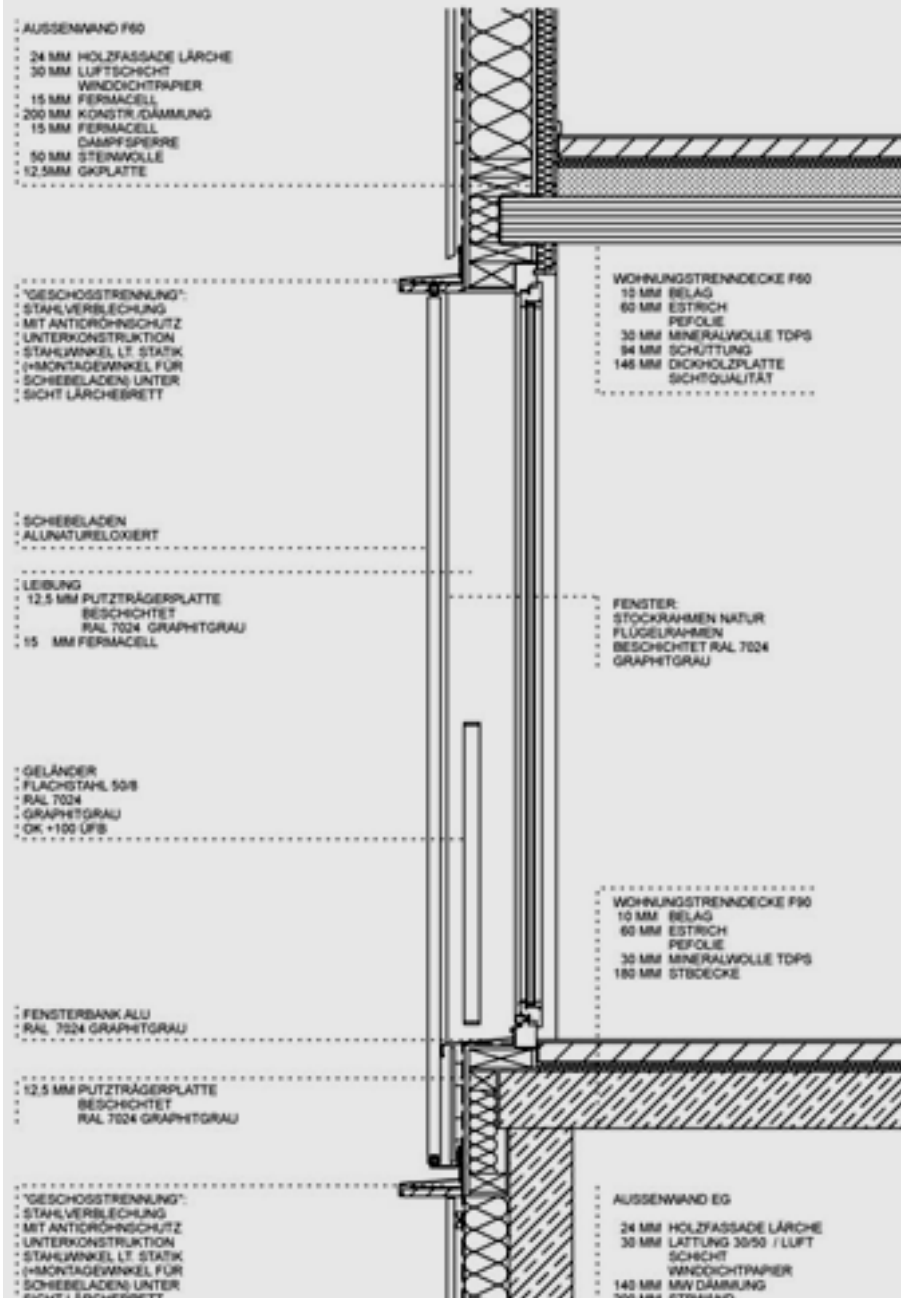
www.hausderzukunft.at





















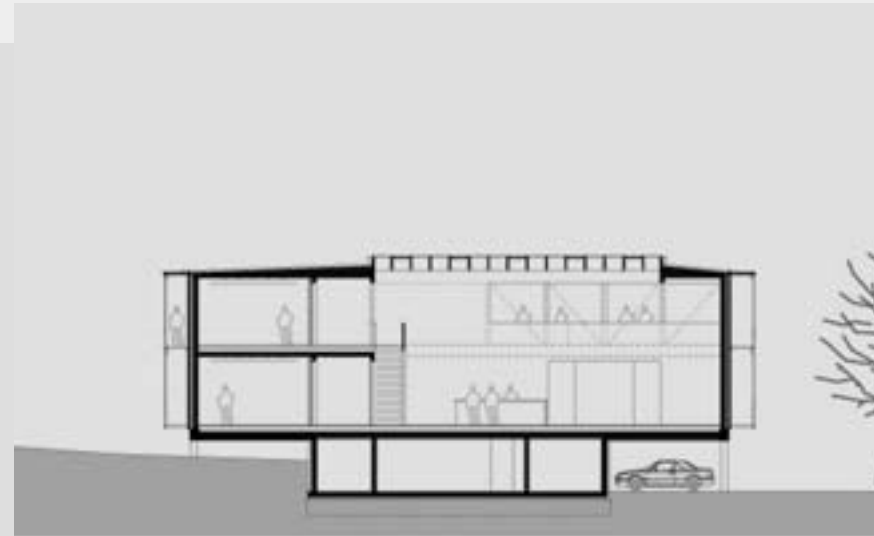
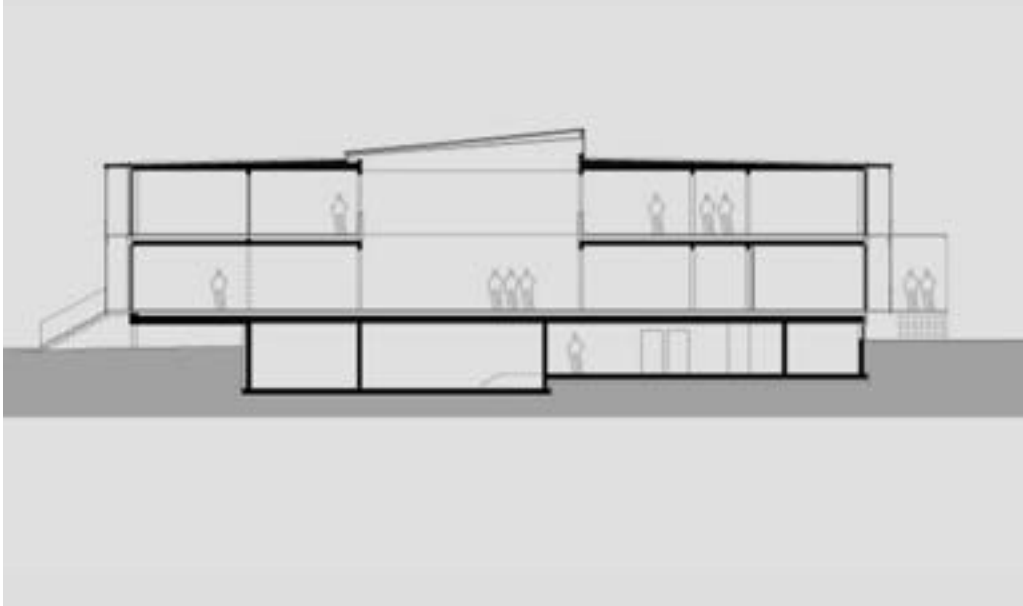
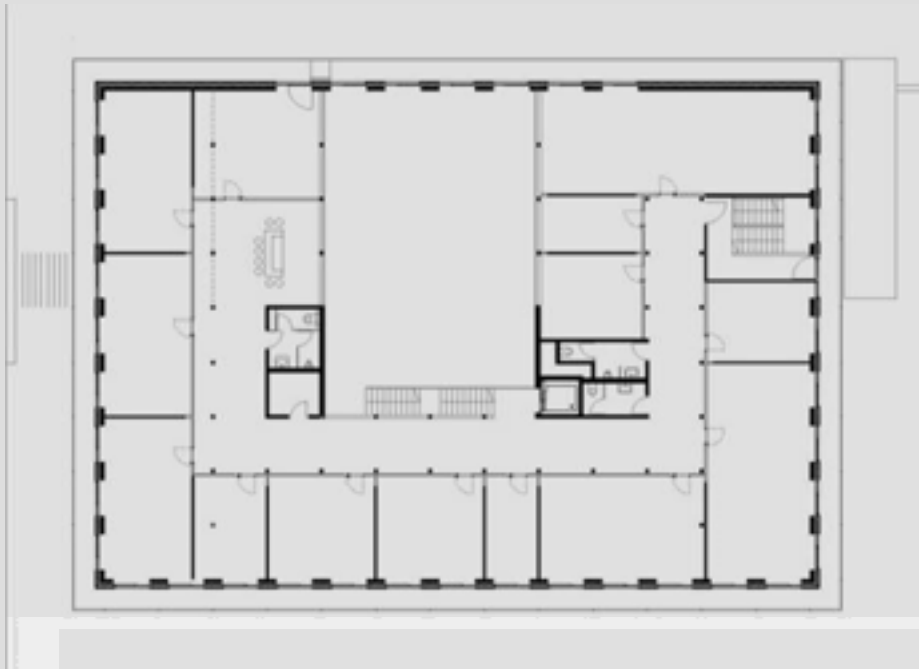


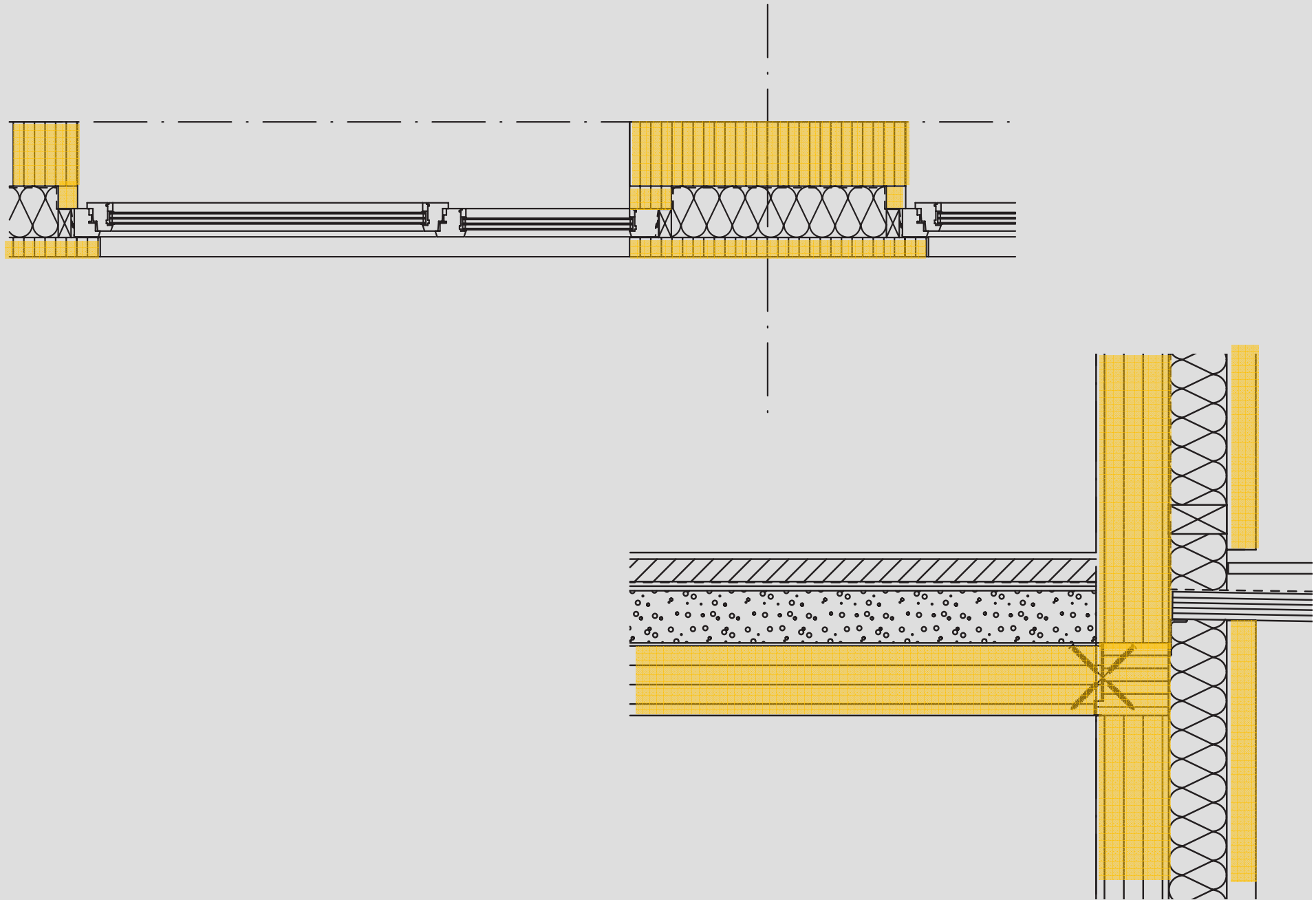




































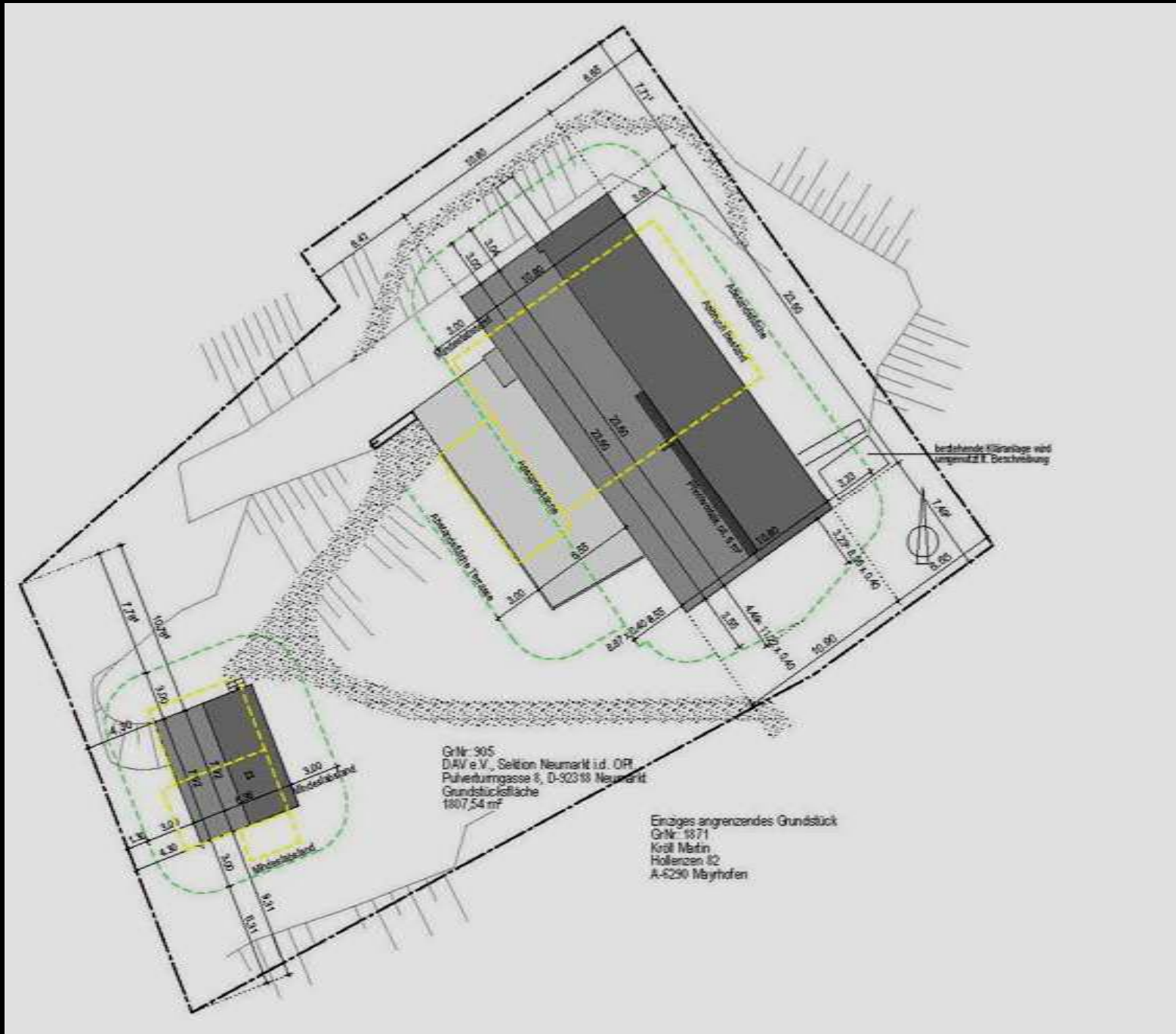






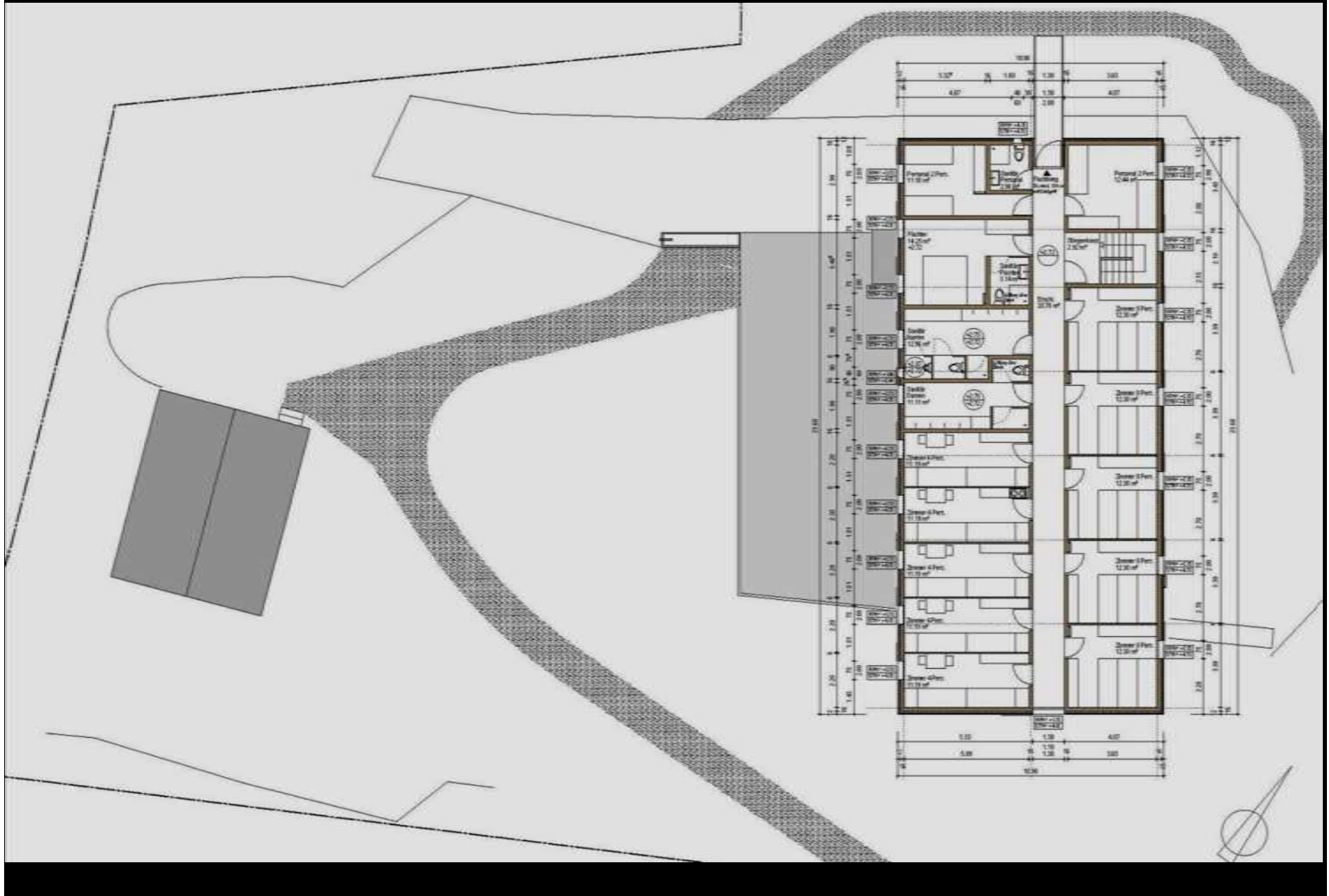


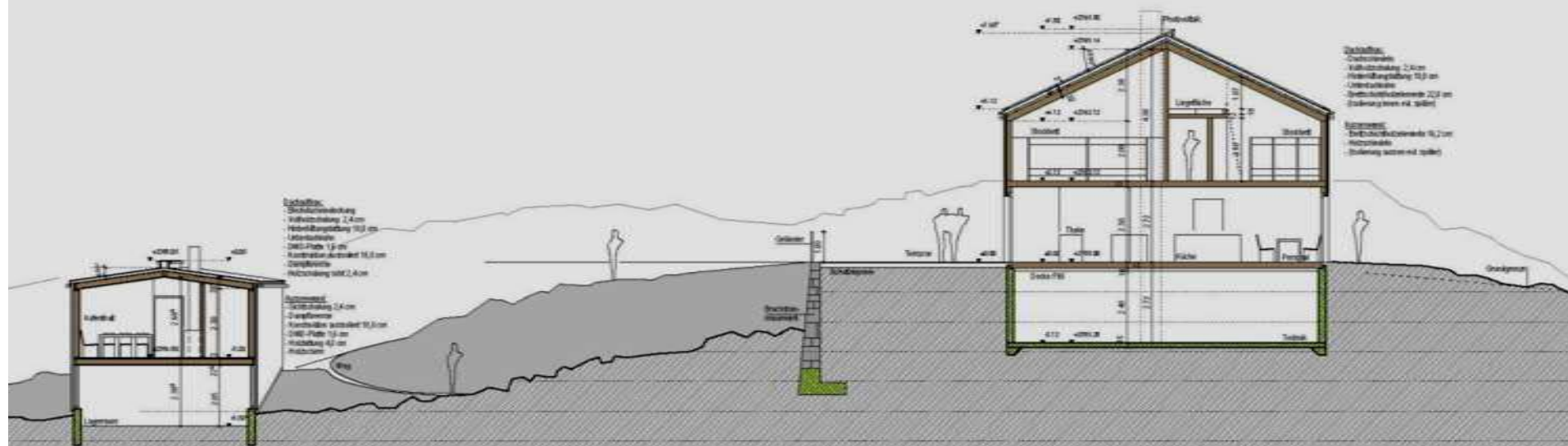






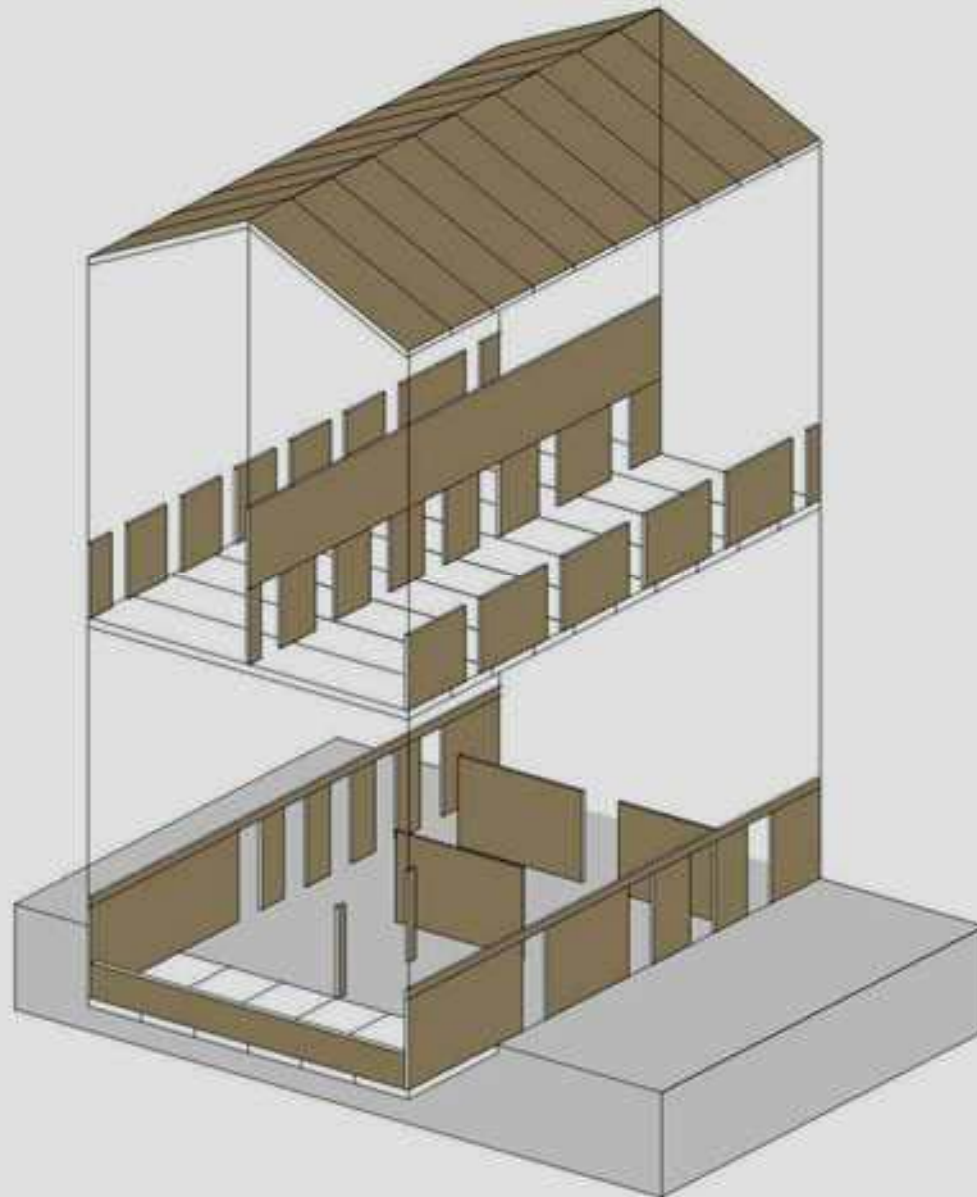
GFL.
1807.54 m²











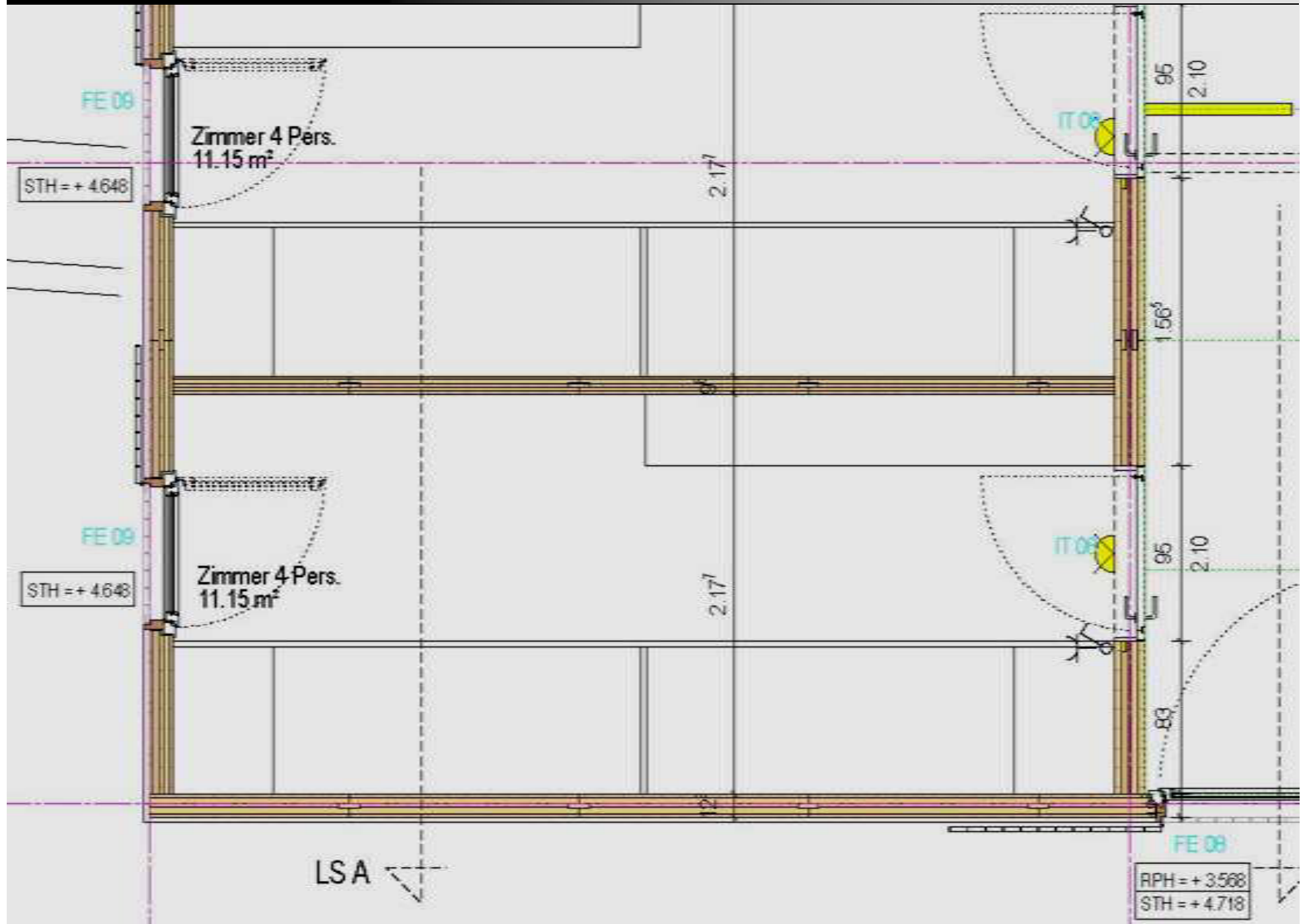
AUSSENWAND
 AUFBAU VON AUSSEN NACH INNEN
 HOLZSCHINDELUNG
 BRETTSPERRHOLZELEMENT SICHTBAR 162 MM

TRAGENDE ZWISCHENWAND
 BRETTSPERRHOLZELEMENT
 SICHTBAR 162 MM

TRENNWAND
 DREISCHICHTPLATTE FICHTE
 SICHTBAR 60 MM

SATTELDACH
 AUFBAU VON AUSSEN NACH INNEN:
 HOLZSCHINDELUNG
 VOLLSCHALUNG FICHTE 27 MM
 HINTERLÜFTUNGSLATTUNG 50/100 MM
 UNTERDACHBAHN
 BRETTSPERRHOLZELEMENT SICHTBAR 162 MM

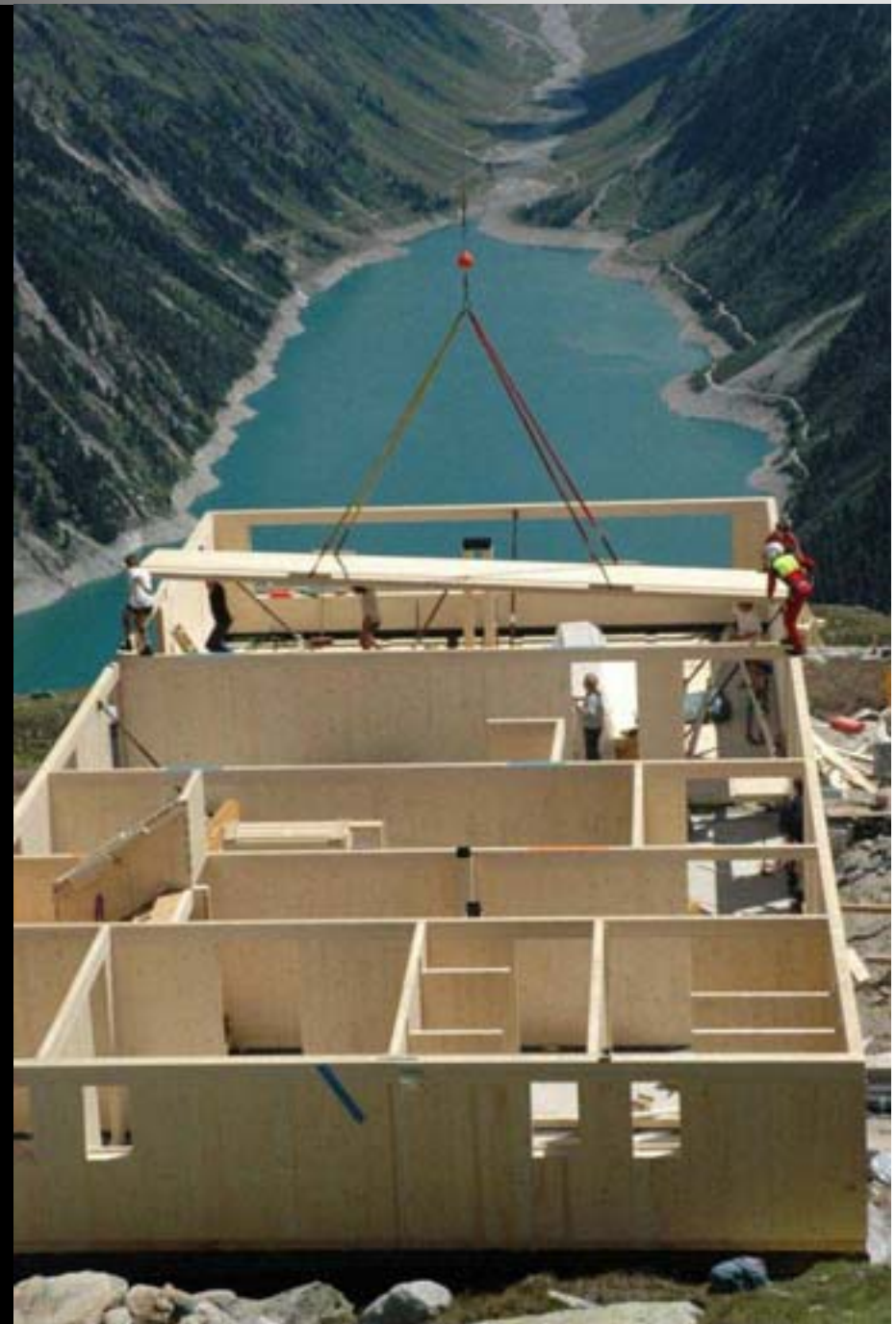
ZWISCHENDECKE
 AUFBAU VON OBEN NACH UNTEN:
 BRETTSPERRERELEMENT OBEN UND
 UNTEN SICHTBAR 200 MM
 MIT AKKUSTIPROFIL



























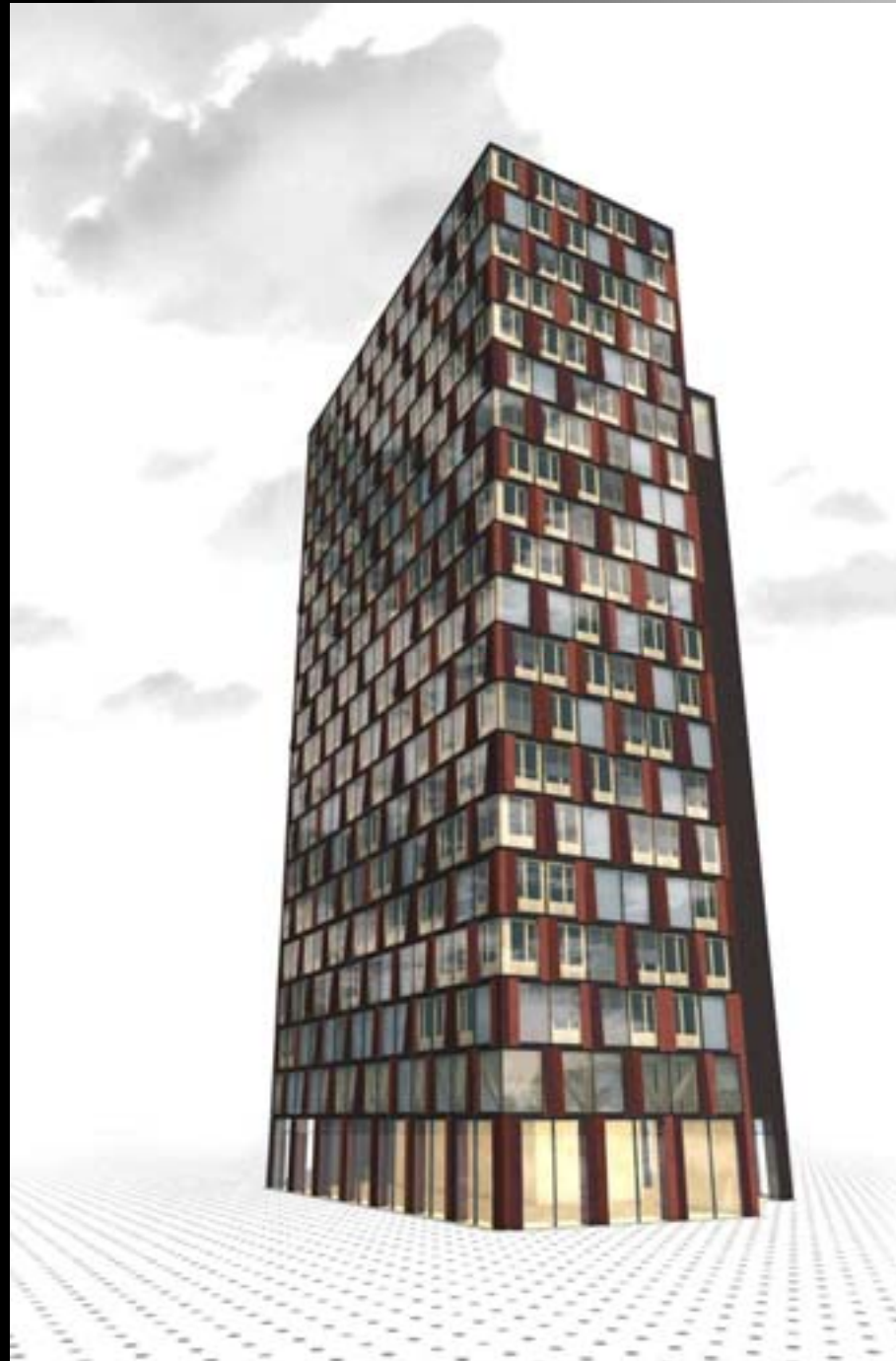










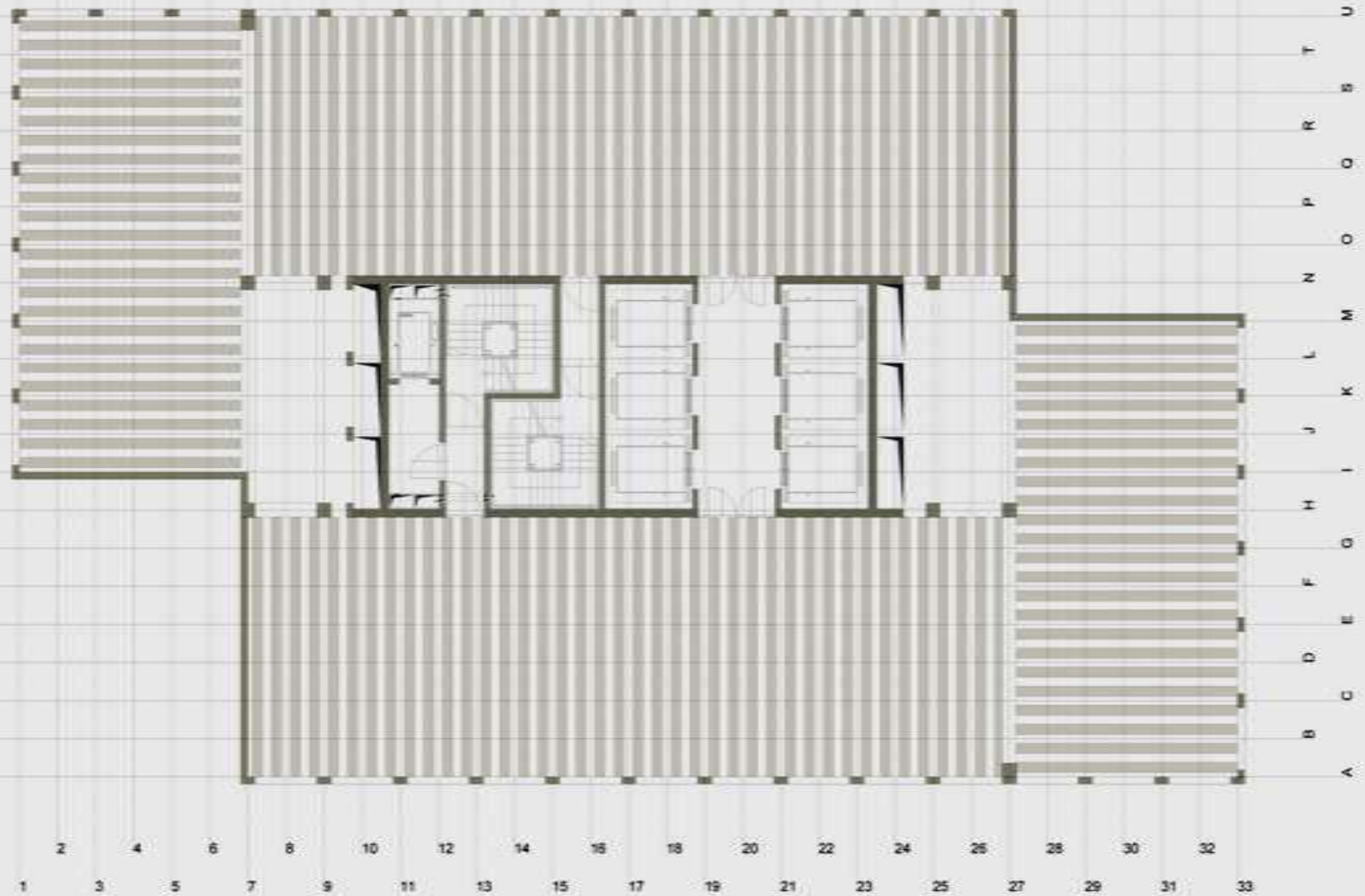


Otto Kapfinger (ED)

HERMANN KAUFMANN WOODWORKS

ökorationale baukunst – architecture durable

SPRINGER VERLAG











Holzwohnbau Jenbach







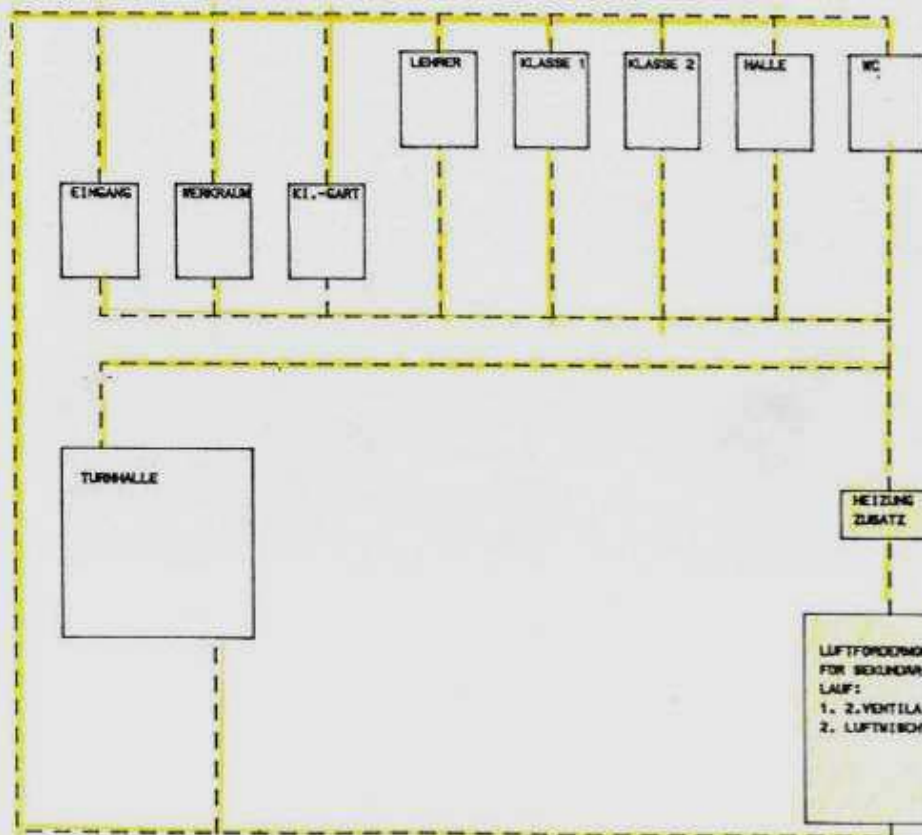






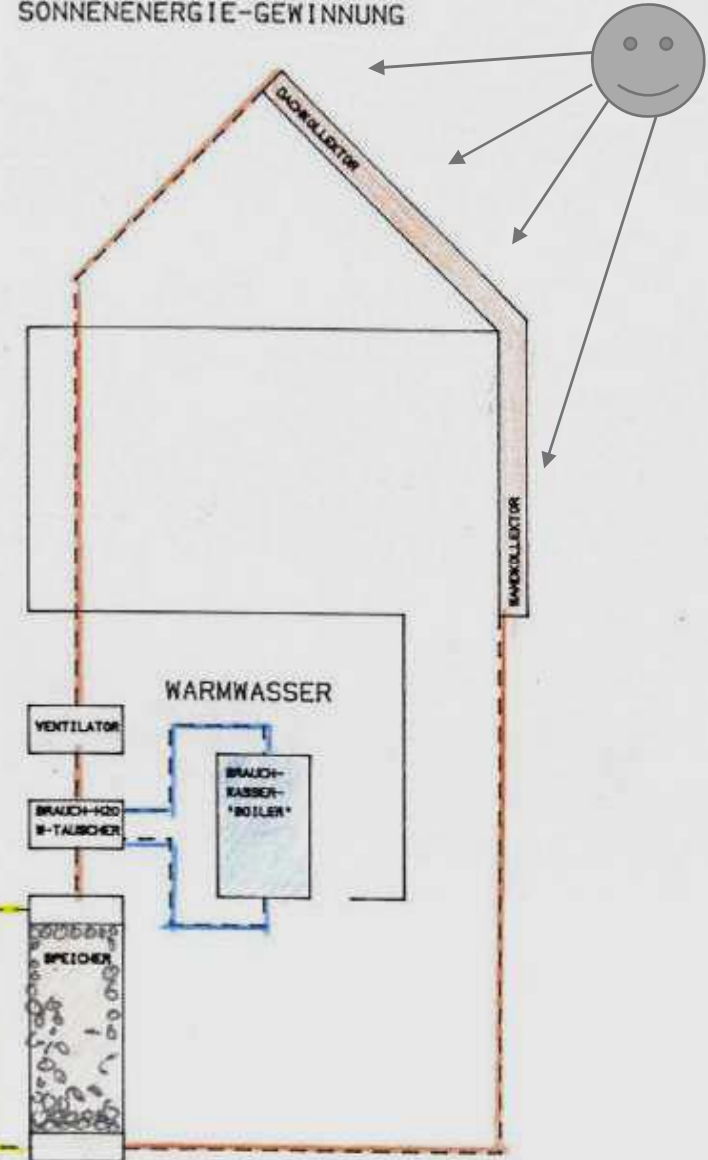
SEKUNDÄR-KREISLAUF

WARMEVERTEILUNG

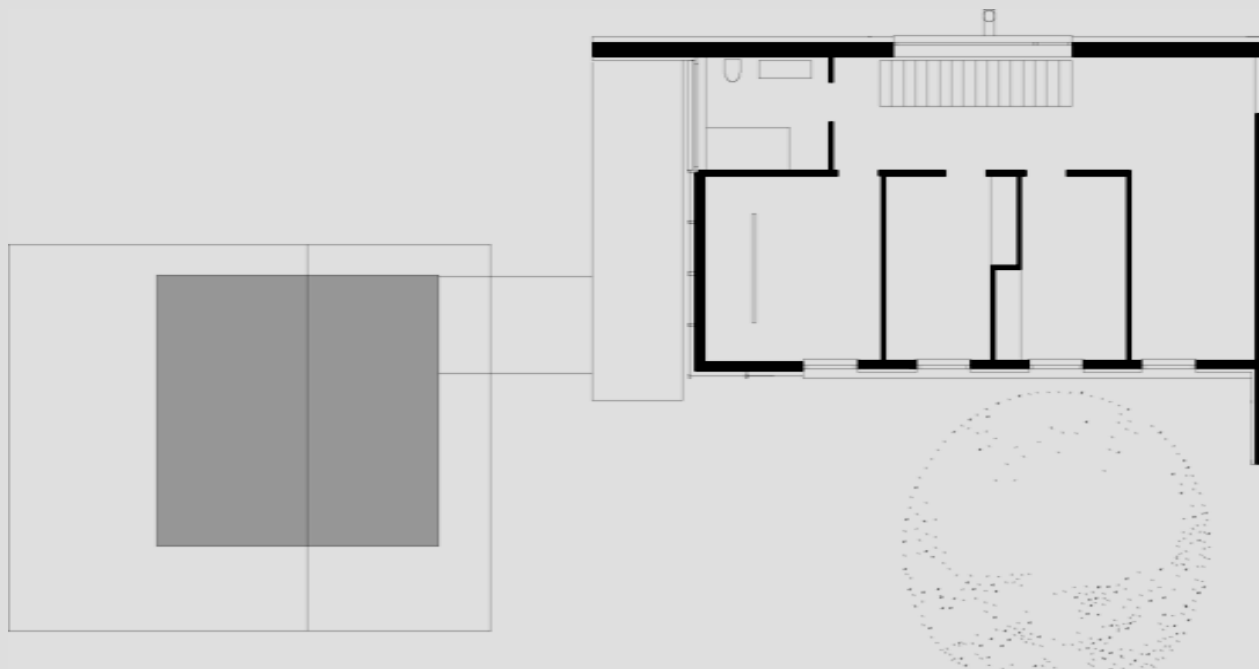
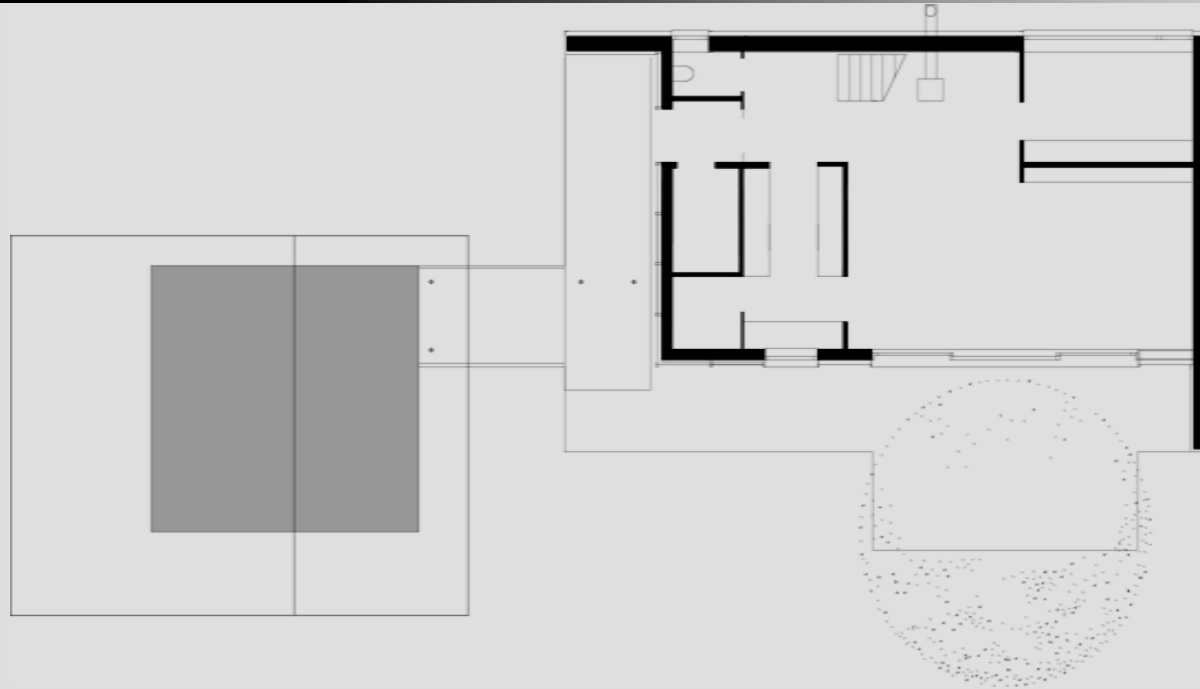


PRIMÄR-KREISLAUF

SONNENENERGIE-GEWINNUNG















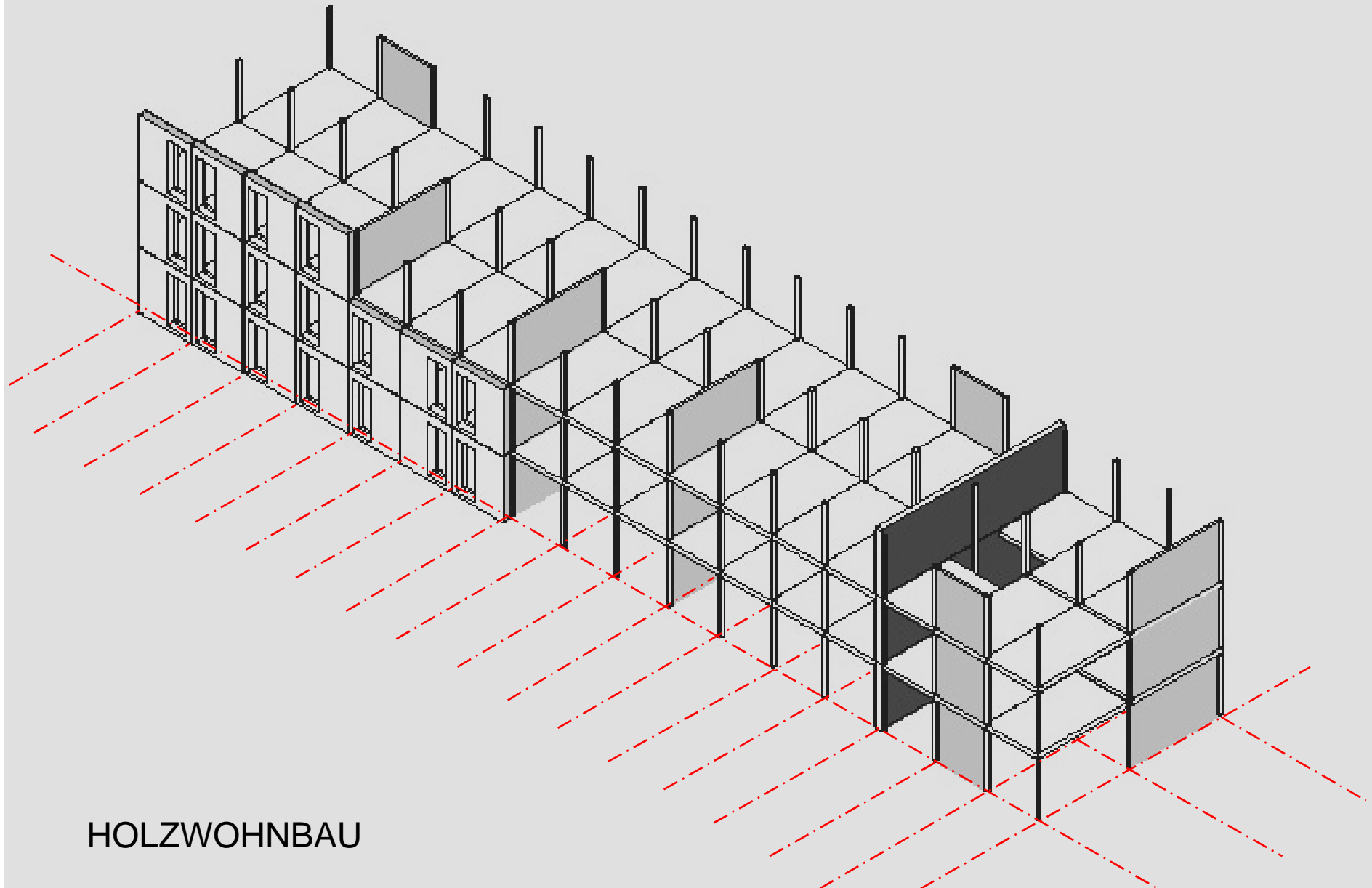




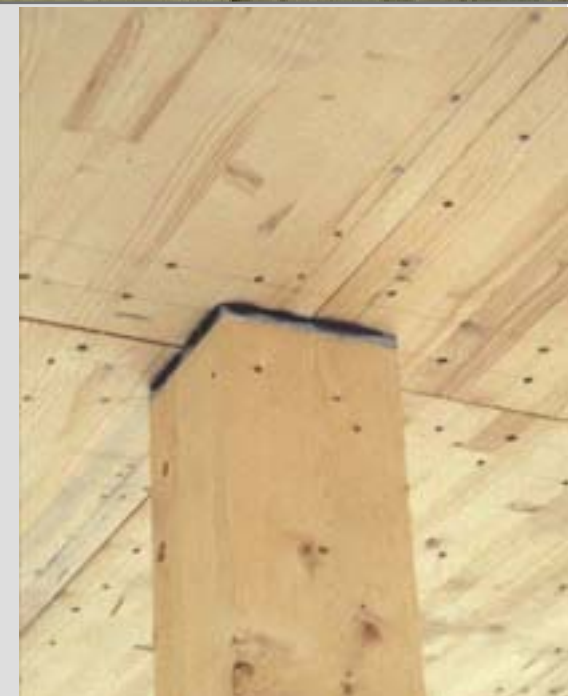
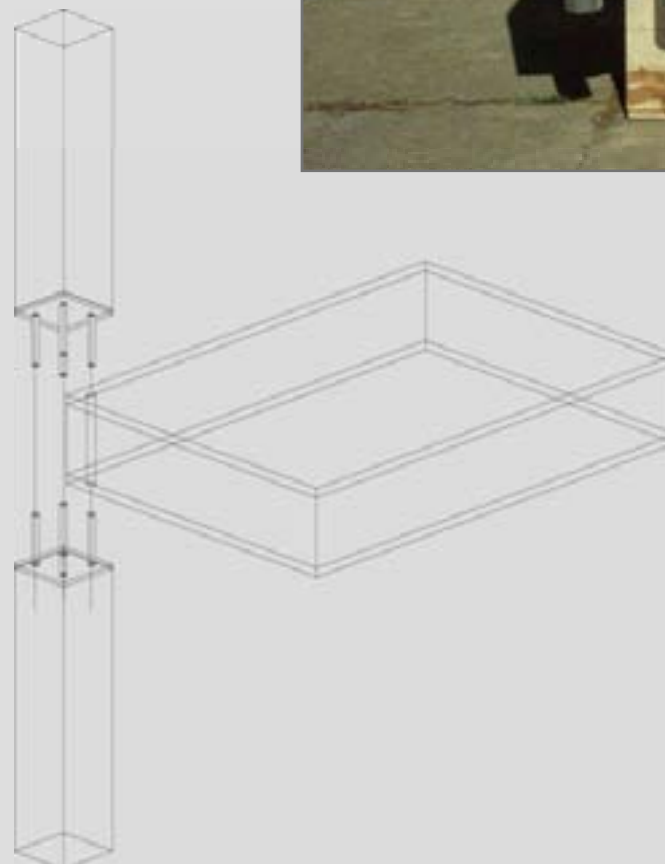


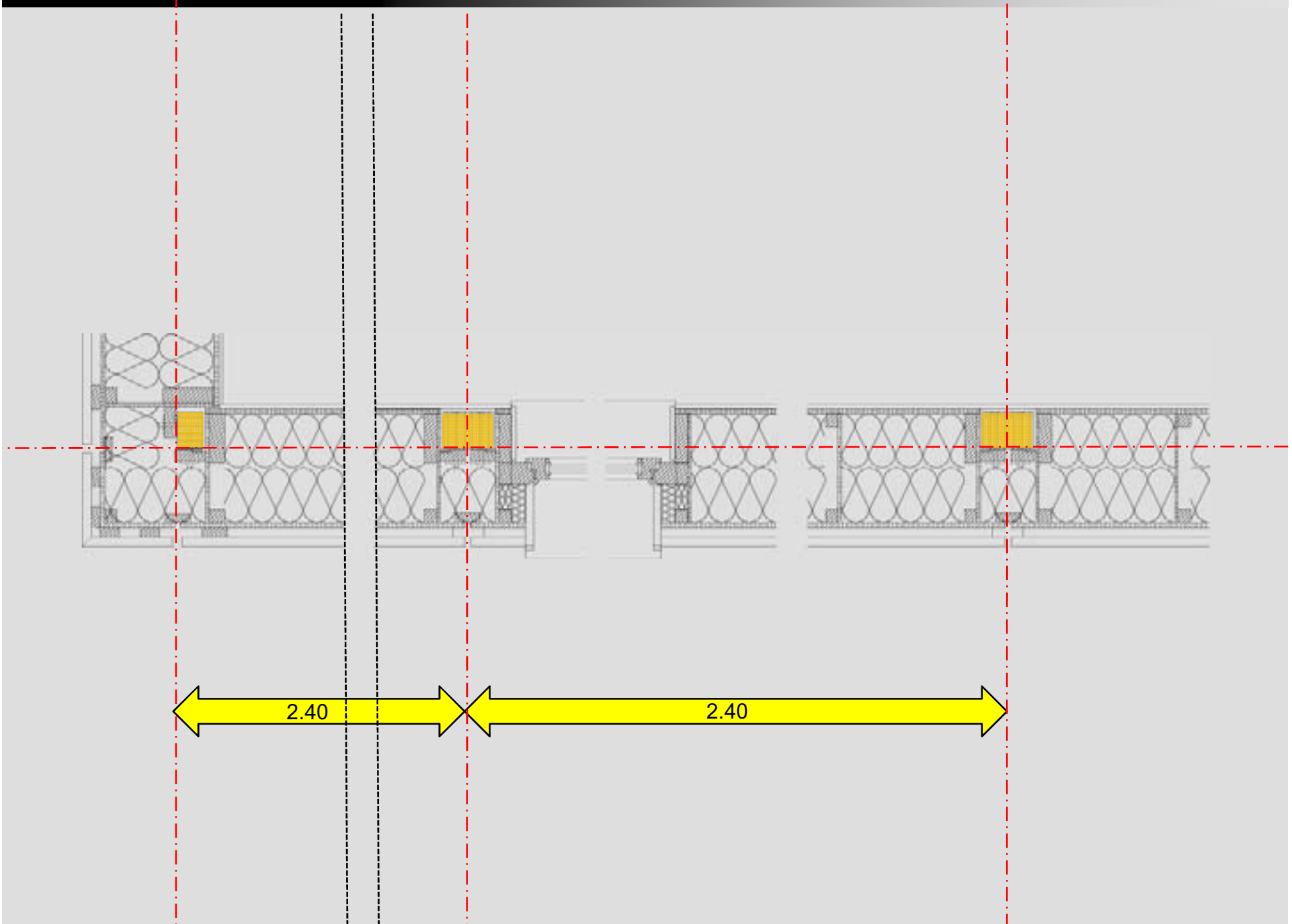


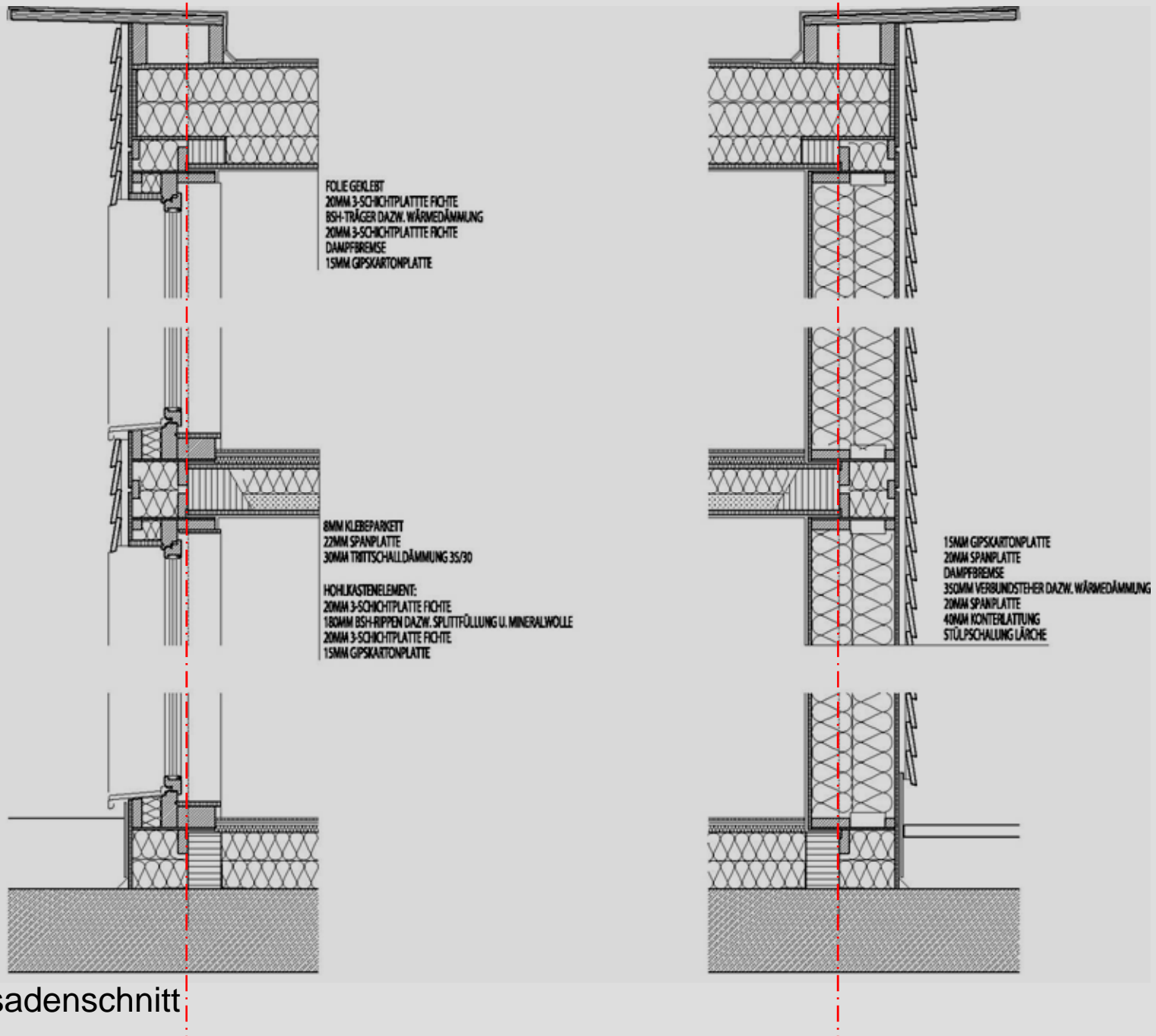




HOLZWOHNBAU







Fassadenschnitt:

















