



LEARNING *to* USE WOOD

WOOD PROGRAM

www.arkkitehtuuri.tkk.fi

TKK - Helsinki University of Technology - Department of Architecture



FOREST



TREE



WOOD



TIMBER



INDUSTRIAL TIMBER



ENGINEERED TIMBER



TIMBER COMPONENTS



BUILDING *in* WOOD



ARCHITECTURE *in* WOOD



TRADITION

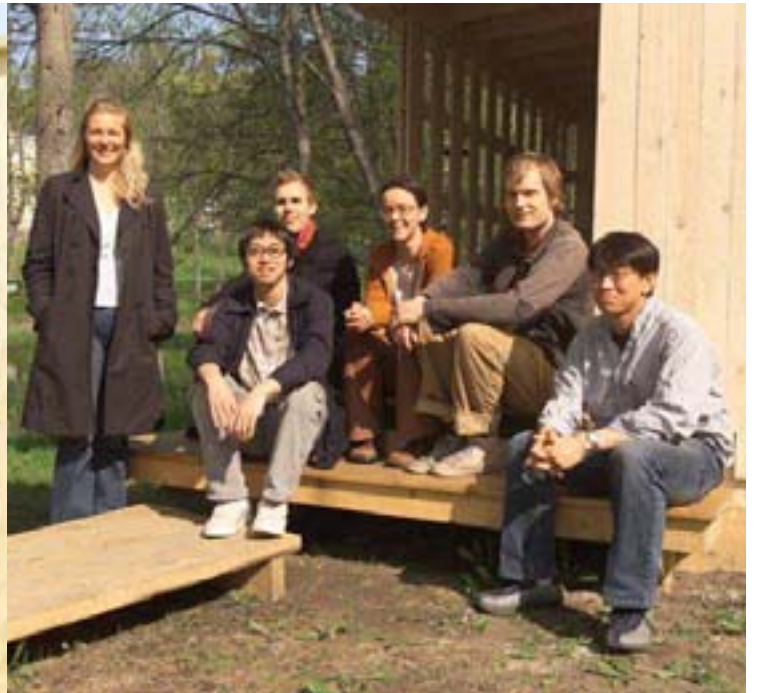


FUTURE





LEARN *by* DOING



INTERNATIONALITY (30 nationalities)



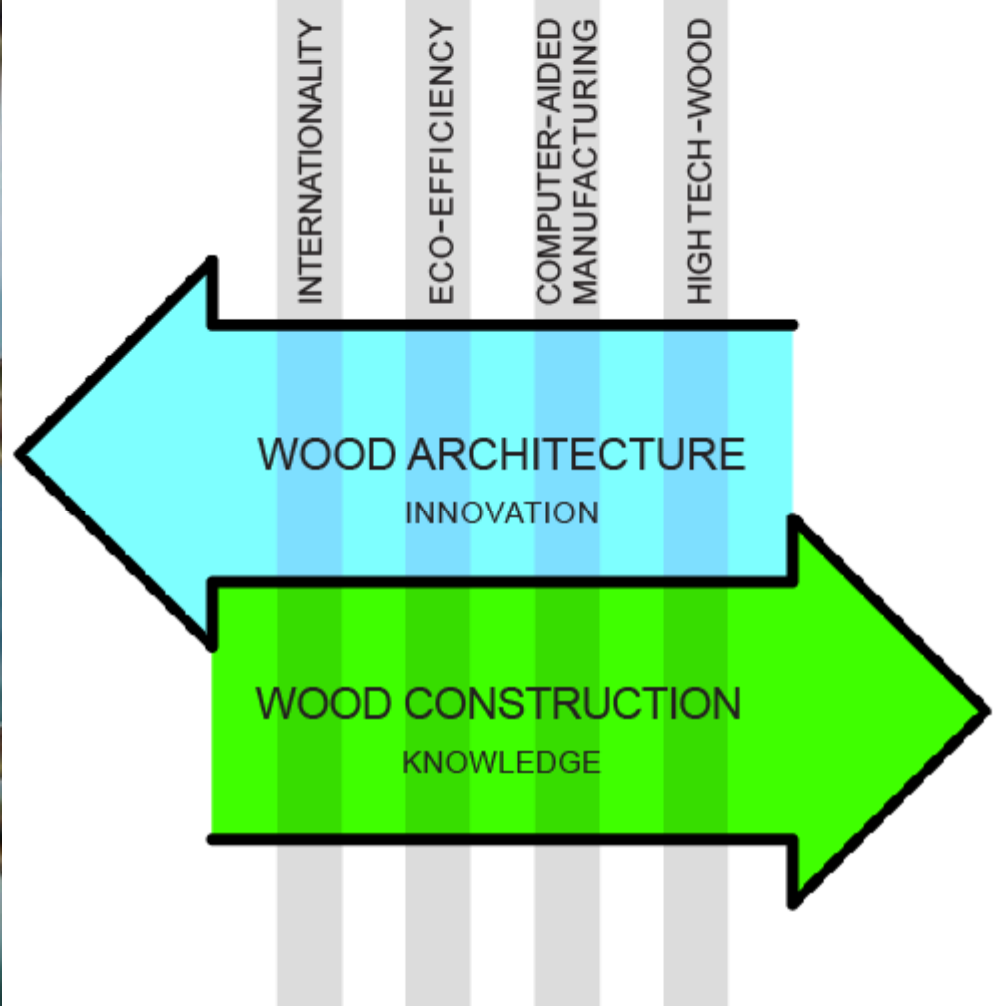
EXPERIENCE



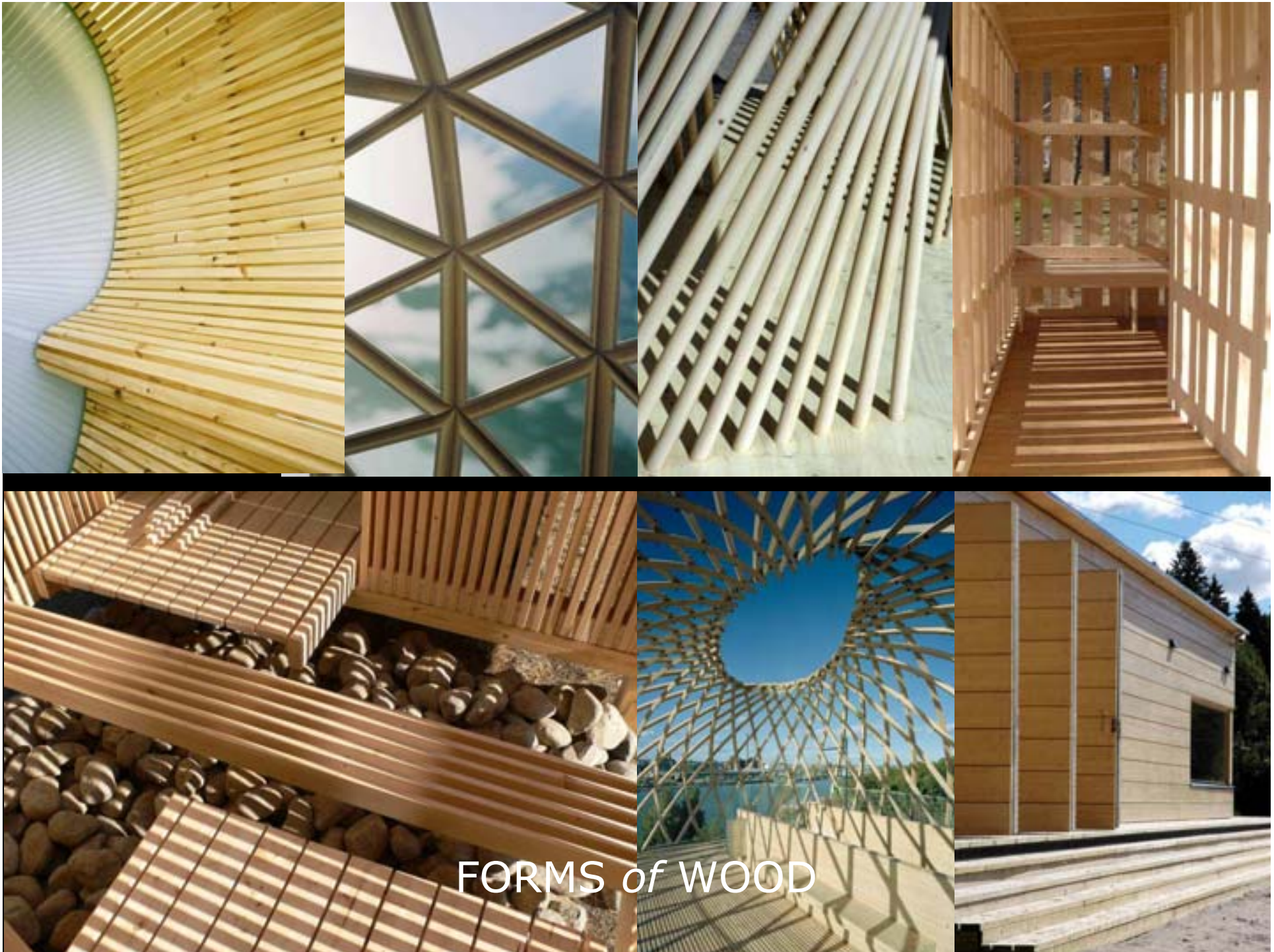
WORK



PLAY



the STRATEGY



FORMS of WOOD



F

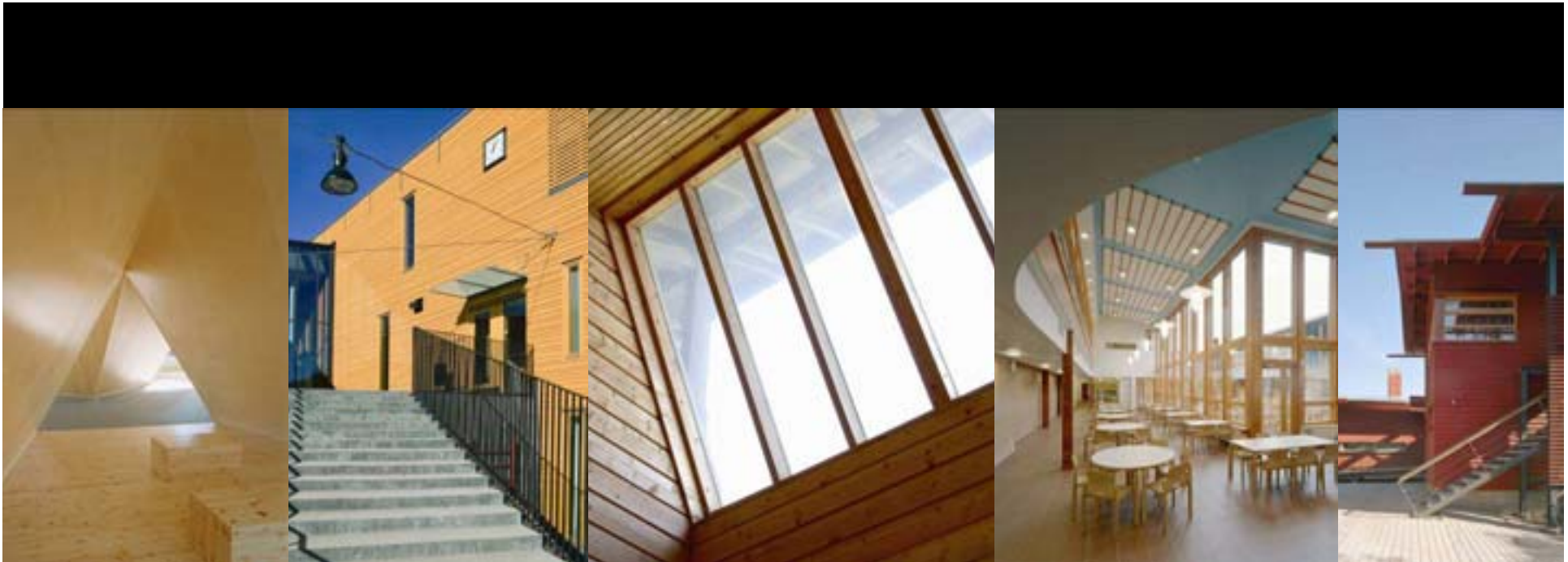












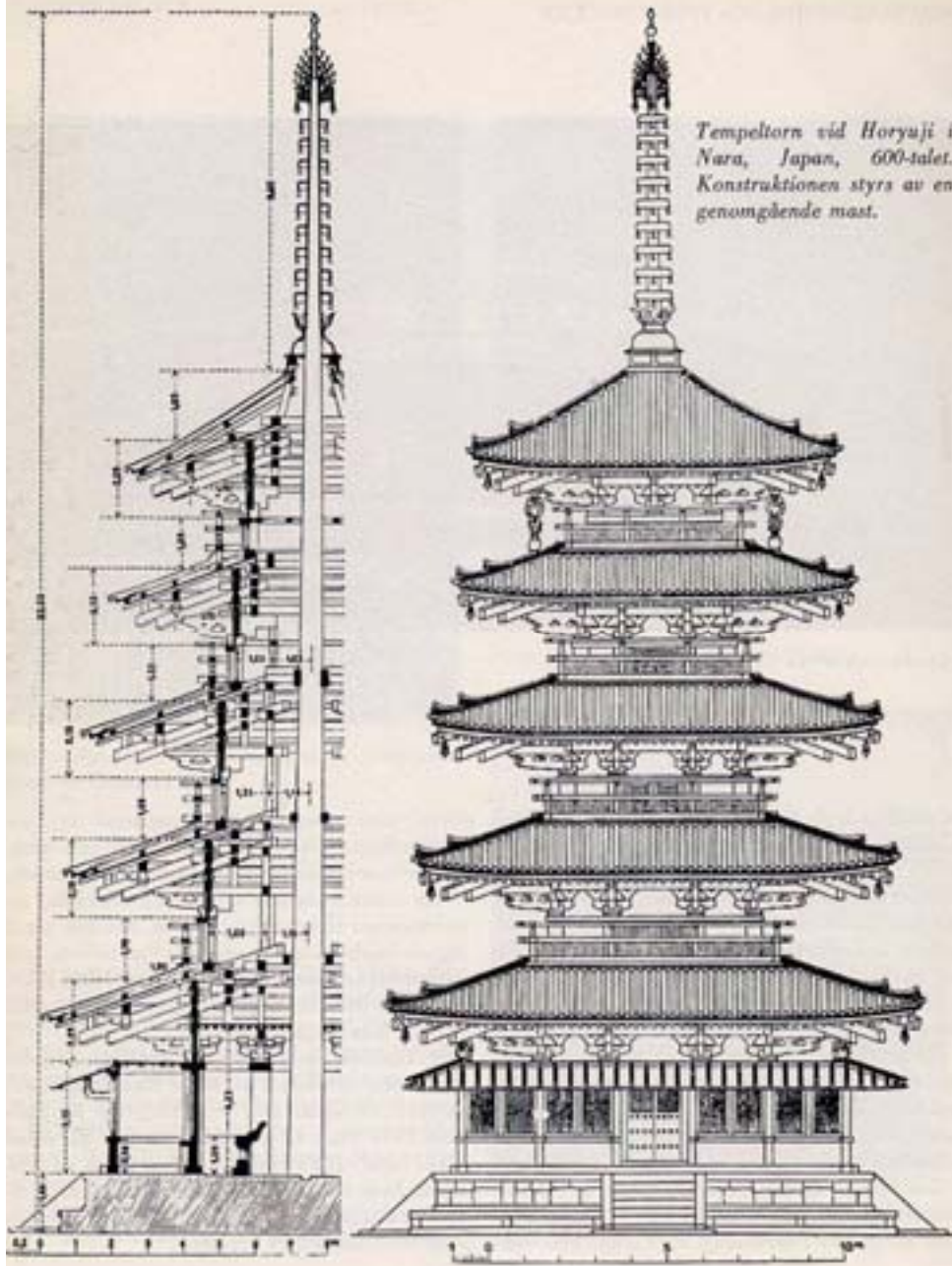
B



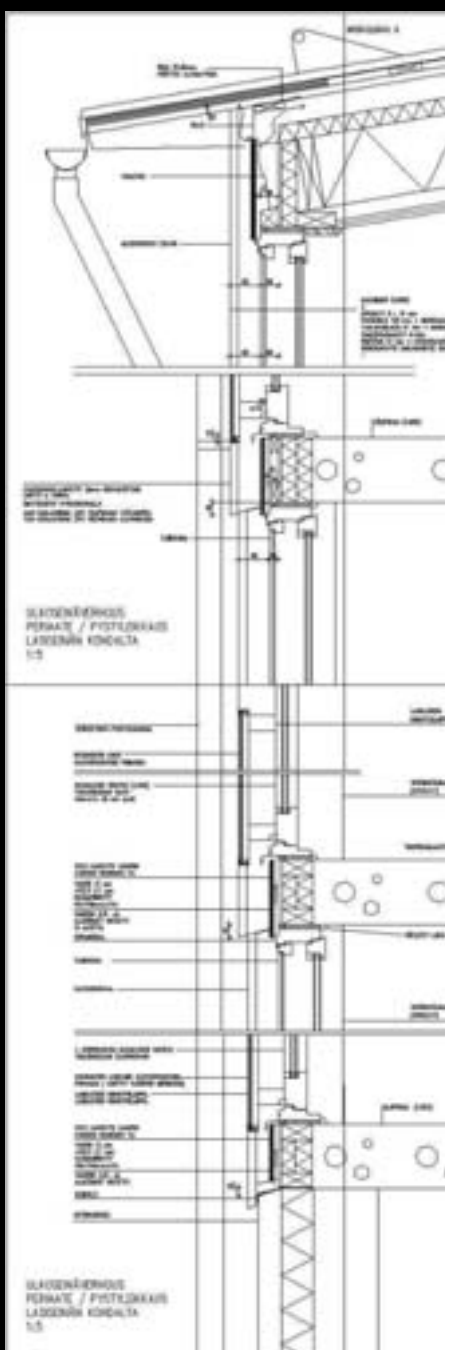
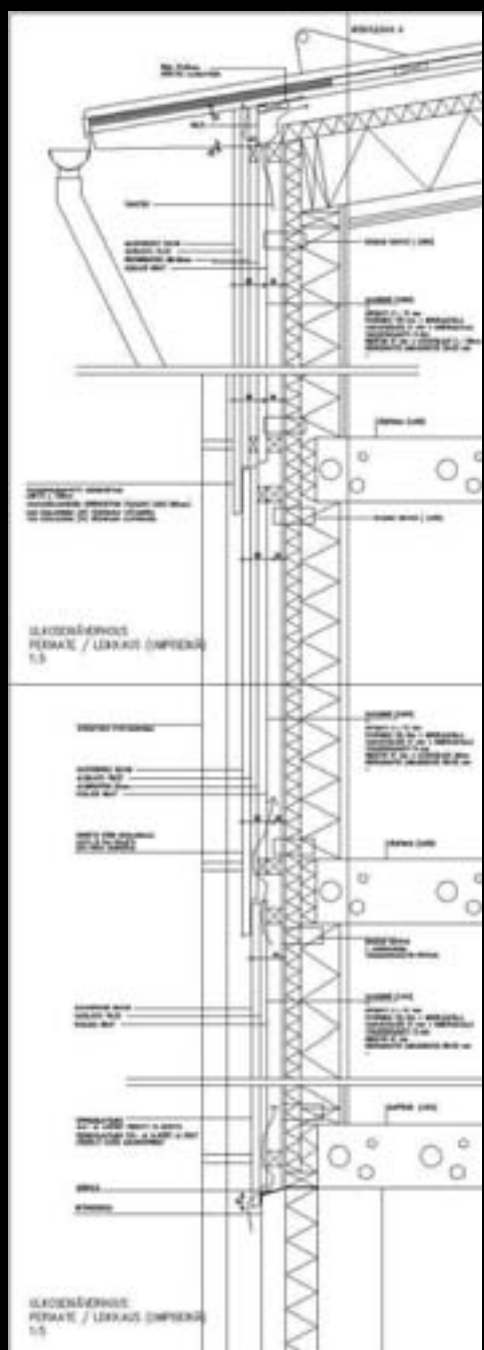


D





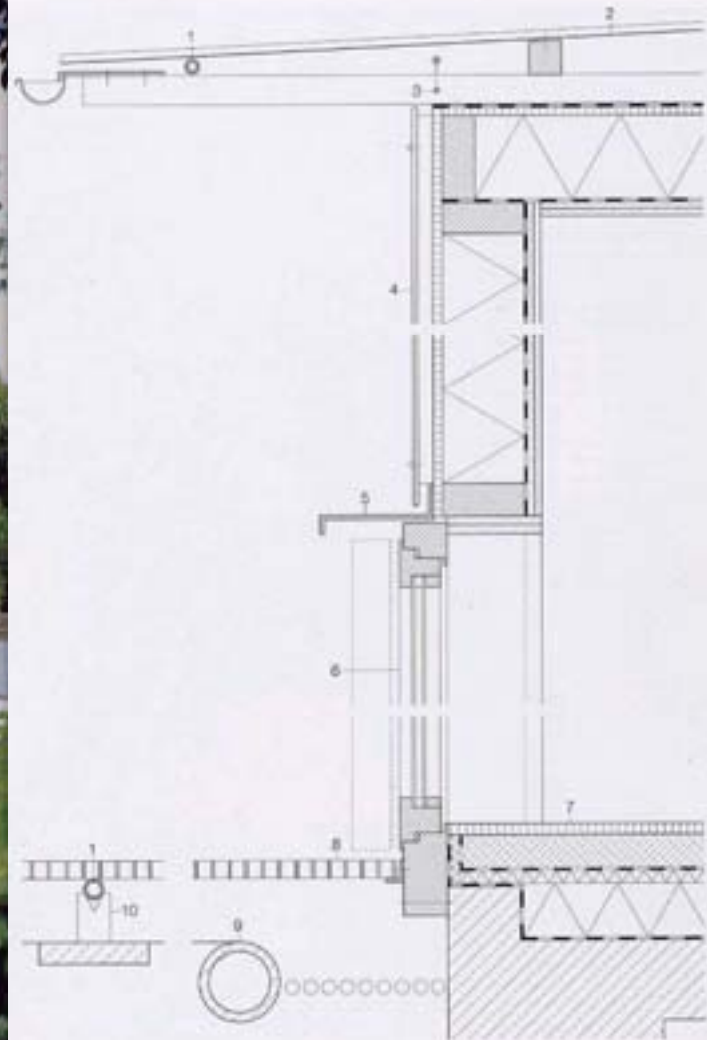
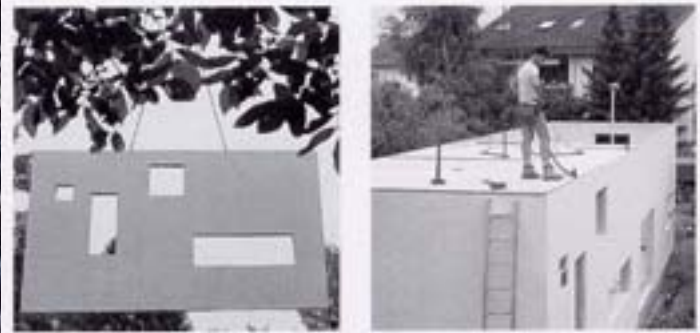
Tempeltorn vid Horyuji i Nara, Japan, 600-talet. Konstruktionen styrs av en genomgående mast.

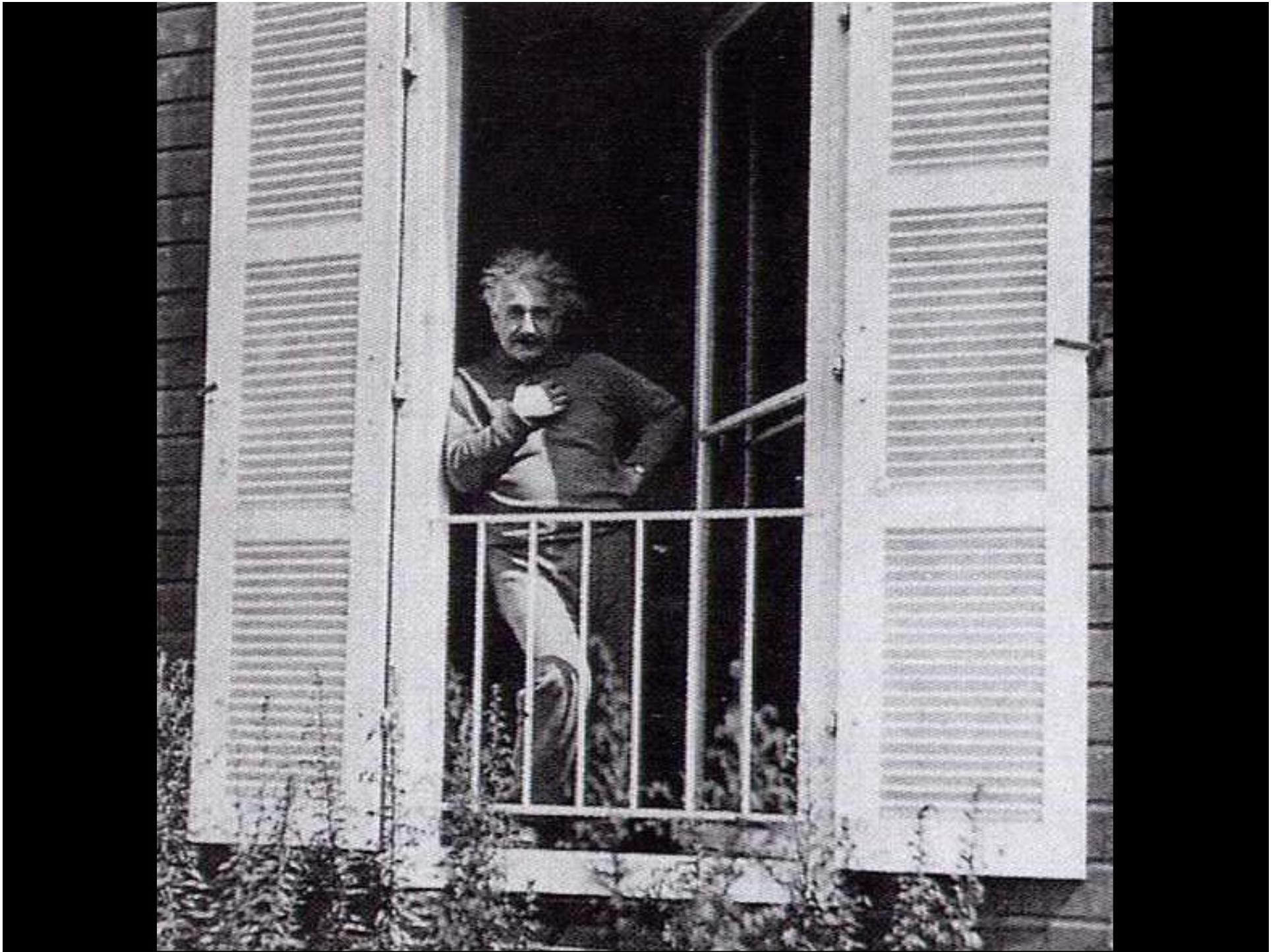








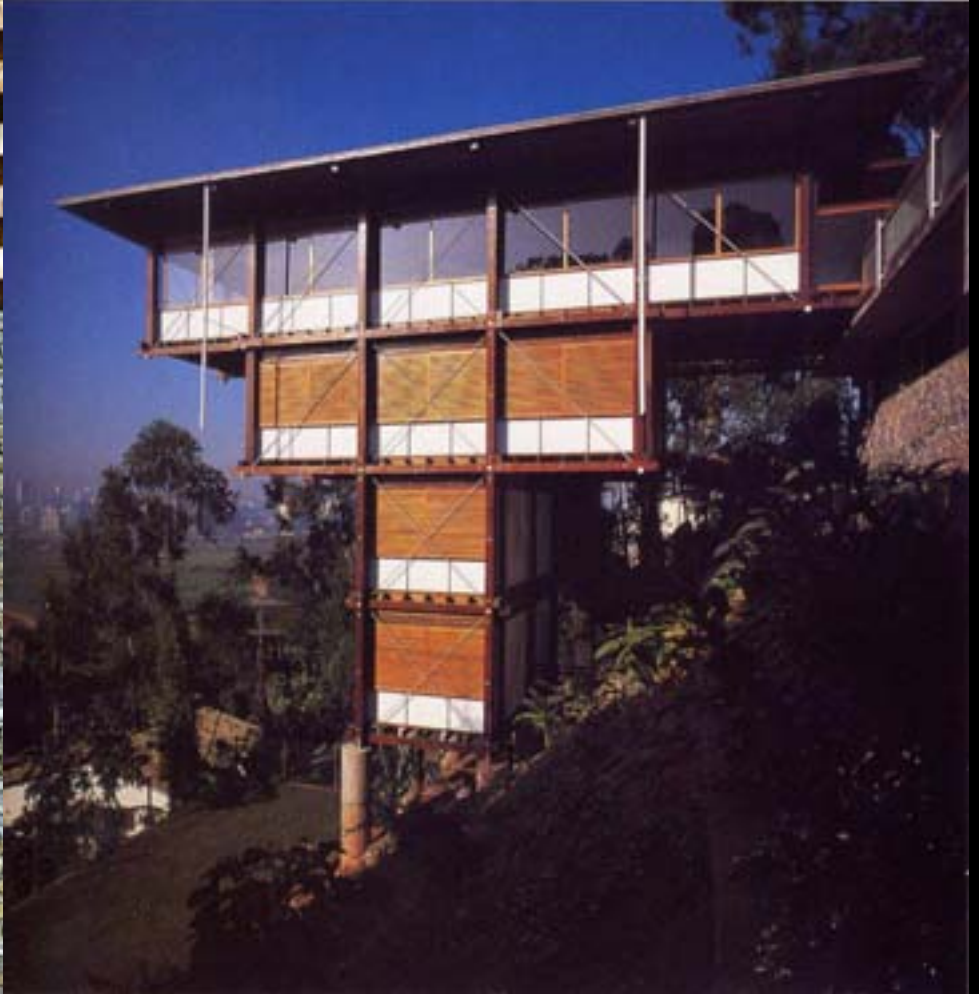
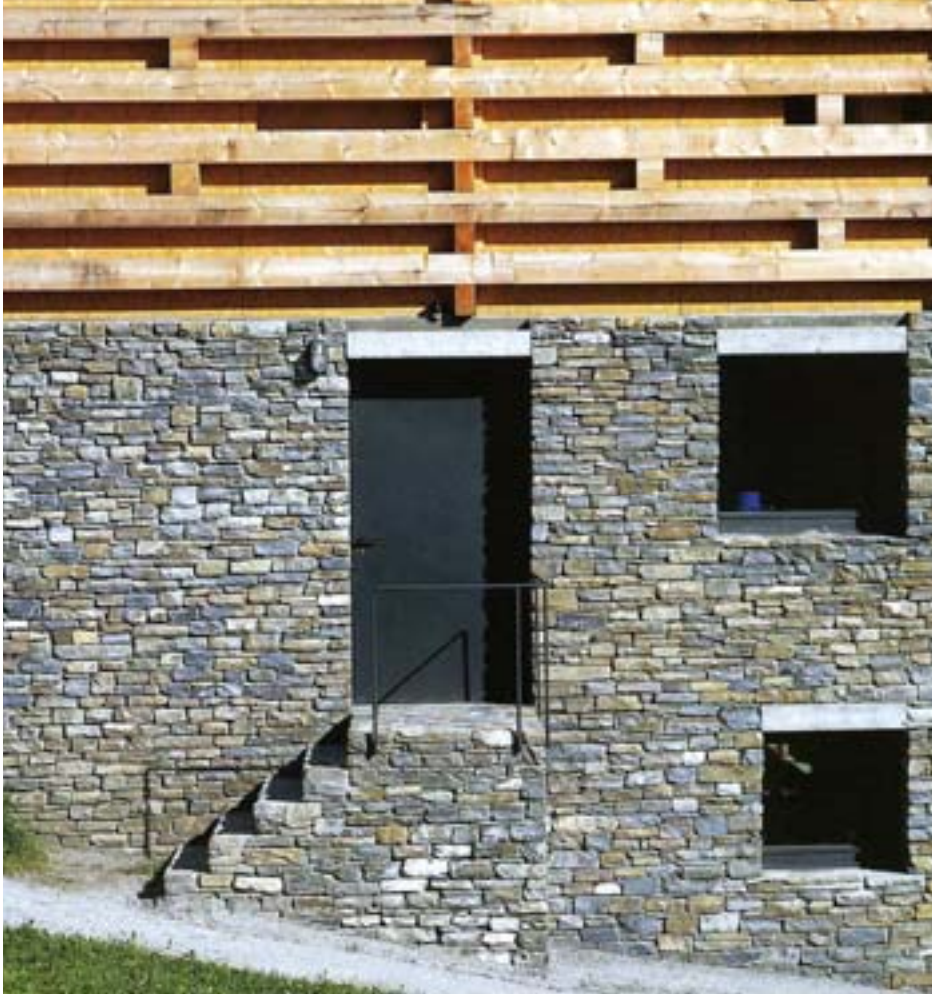


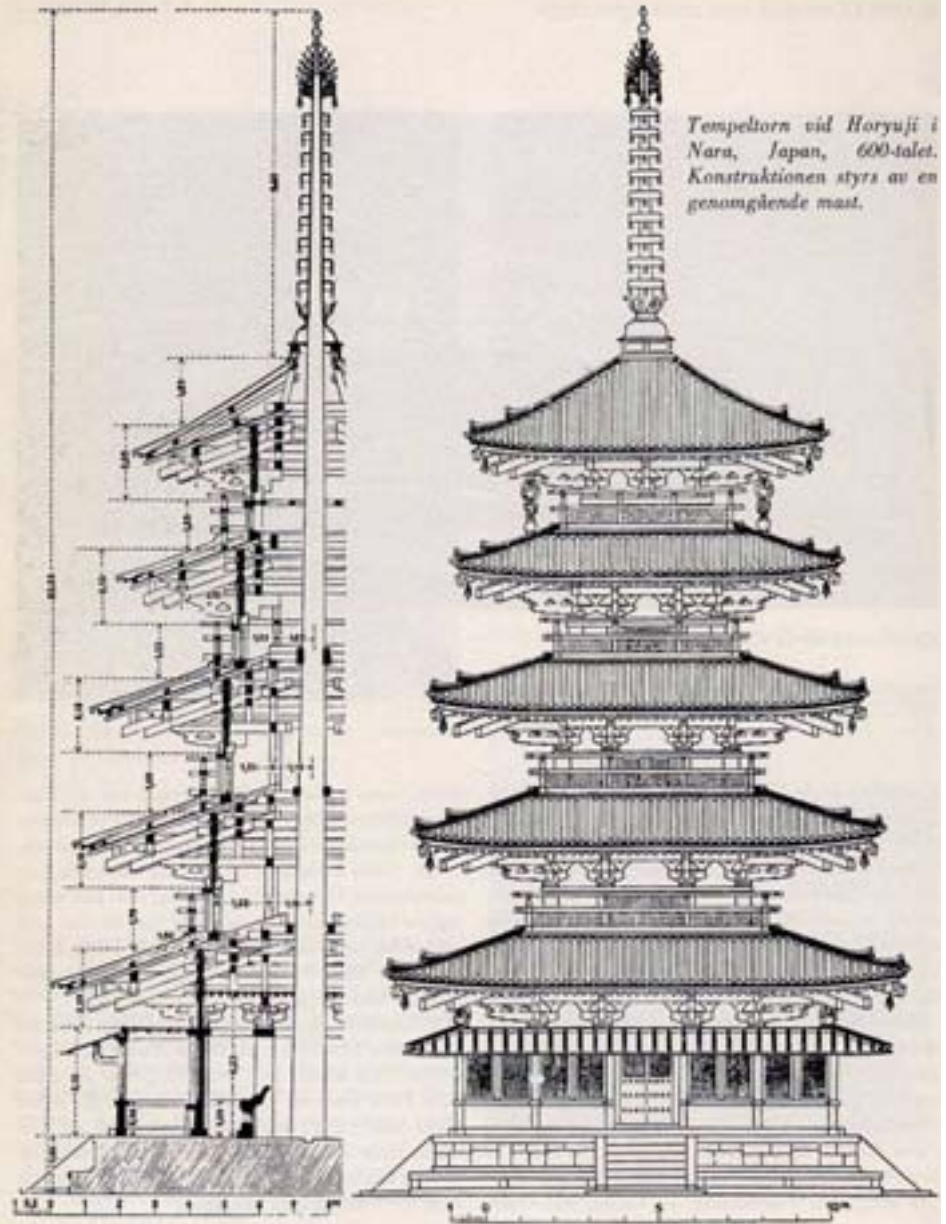






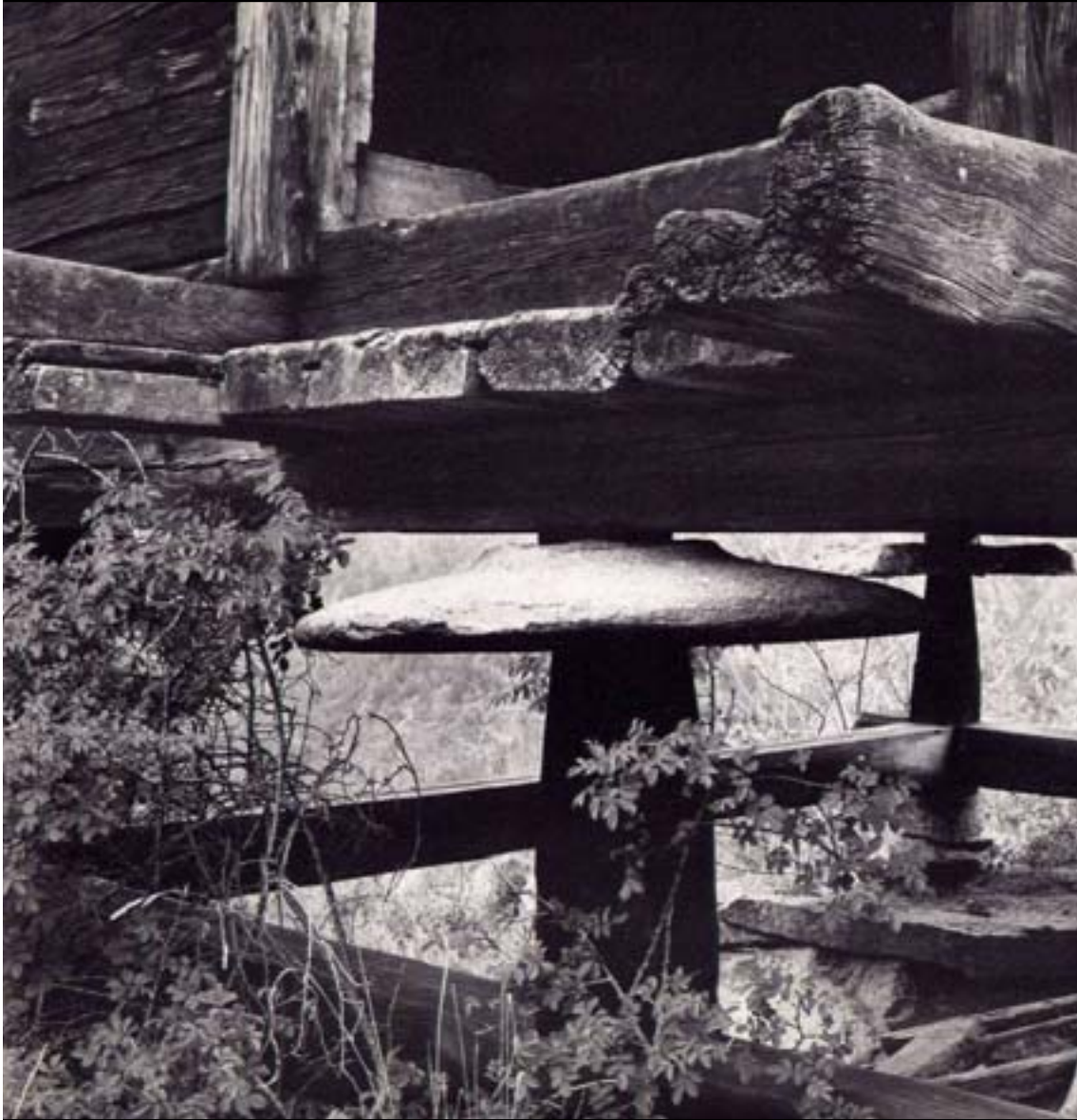




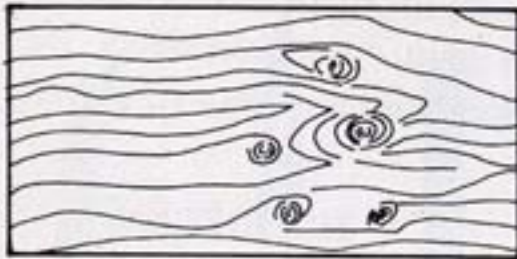




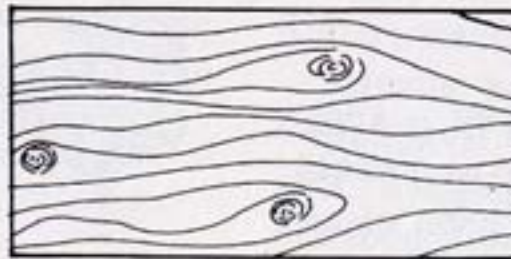




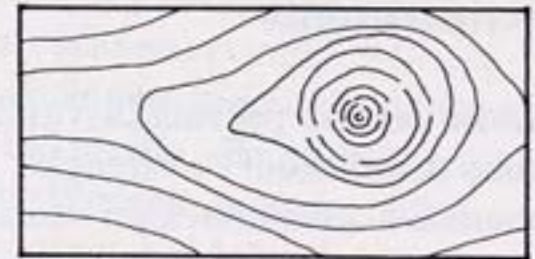




Oksaryhmä



Hajaoksat



Pyöreä oksa



Soikea oksa



Särmäoksa



Lehtioksa



Helmioksa

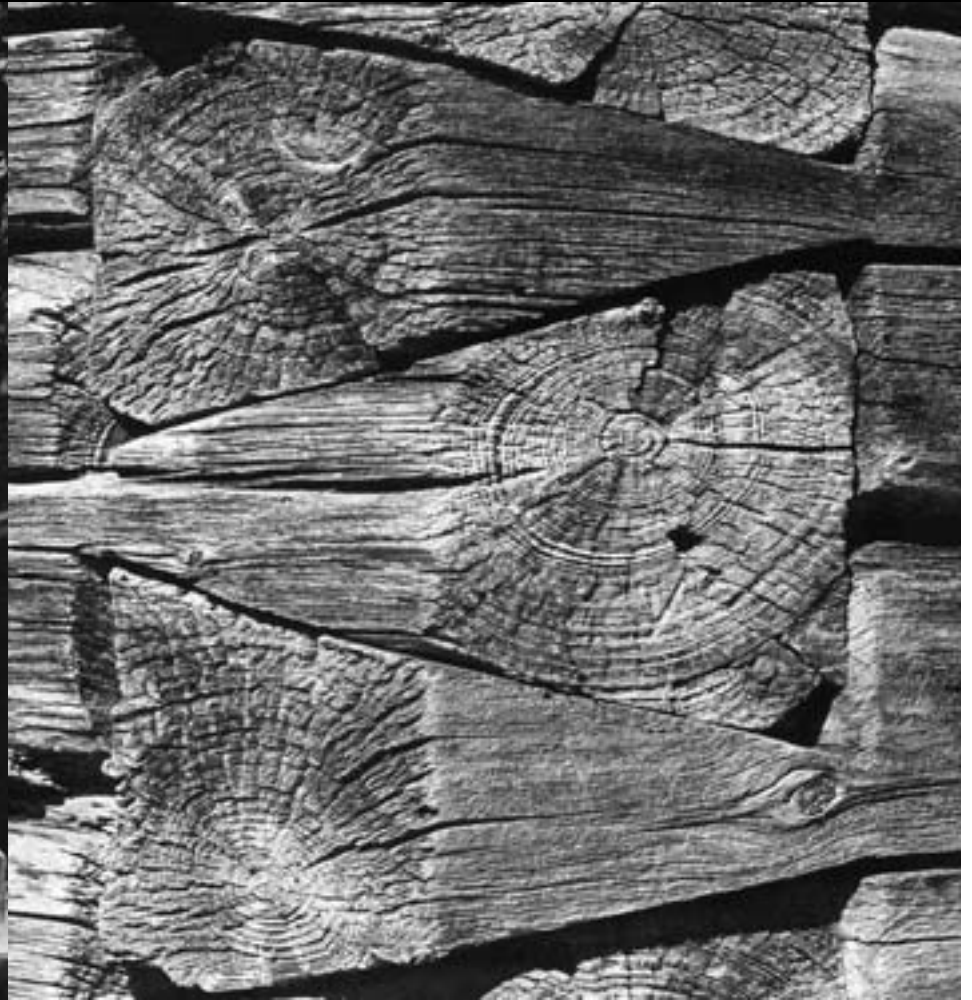


Sarvioksa



Viiksioksa





A photograph of a woodworking workshop. In the foreground, a wooden mallet with a handle and a rectangular head lies on a grey surface. The mallet head has the letters 'TKK' written on it. The surface is covered with numerous wood shavings and curls. In the background, a wooden structure is being worked on, with a green and blue power tool visible. The overall scene is a close-up of a woodworker's workspace.

WOOD PROGRAM

www.arkkitehtuuri.tkk.fi

TKK - Helsinki University of Technology - Department of Architecture